



# SPEC SHEET

**For 400, 500 and 600 amp Euro  
T-Gun™ Semi-Automatic Air-Cooled  
MIG Guns**



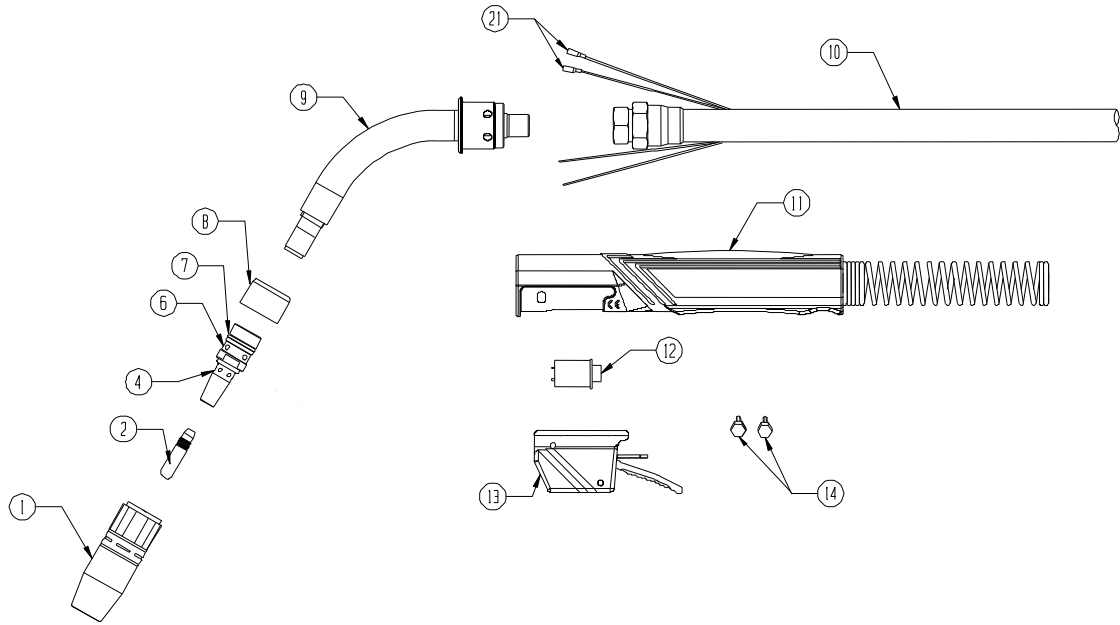
## AMPERAGE RATINGS

GUN MODEL	60% DUTY CYCLE	
	100% CO <sub>2</sub>	80% Ar, 20% CO <sub>2</sub>
400 amp Euro	400	300
500 amp Euro	525	400
600 amp Euro	650	500

## STANDARD PARTS

GUN MODEL	NECK	NOZZLE	RETAINING HEAD	NECK INSULATOR	CONTACT TIPS
400 amp Euro	405-60	401-4-62	404-26	402-11	403-20-xx
500 amp Euro	505-60	401-6-62	404-26	402-11	403-20-xx
600 amp Euro	505-60	401-6-62	404-26	402-11	403-20-xx

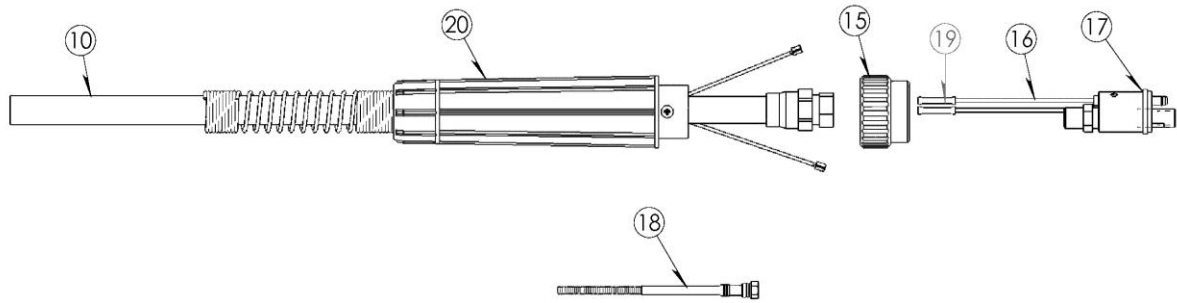
# EXPLODED VIEW AND PARTS LIST



Numbers in this column correspond to the exploded view images above.

ITEM	PART #	DESCRIPTION
1		<b>STANDARD NOZZLES (SELF-INSULATED)</b>
	401-40-38	10 mm BORE - 1.5 mm TIP RECESS (BRASS)
	401-4-38	10 mm BORE - FLUSH TIP
	401-4-50	13 mm BORE - 3 mm TIP RECESS
	401-4-62	16 mm BORE - 3 mm TIP RECESS
	401-4-75	19 mm BORE - 3 mm TIP RECESS
	401-8-62	3 mm TIP STICKOUT
		<b>HEAVY DUTY NOZZLES (SELF INSULATED)</b>
	401-5-62	16 mm BORE - 6 mm TIP RECESS
	401-5-75	19 mm BORE - 6 mm TIP RECESS
	401-6-50	13 mm BORE - 3 mm TIP RECESS
401-6-62	16 mm BORE - 3 mm TIP RECESS	
401-6-75	19 mm BORE - 3 mm TIP RECESS	
401-7-62	16 mm BORE - 6 mm TIP RECESS (BRASS)	
401-7-87	22 mm BORE - 6 mm TIP RECESS (BRASS)	
2		<b>TREGASKISS™ TOUGH LOCK™ CONTACT TIP</b>
	403-20-30	FOR 0.8 mm WIRE
	403-20-35	FOR 0.9 mm WIRE
	403-20-1.0	FOR 1 mm WIRE
	403-20-45	FOR 1.2 mm WIRE
	403-20-364	FOR 1.2 mm WIRE
	403-20-1.4	FOR 1.4 mm WIRE
	403-20-52	FOR 1.3 mm WIRE
	403-20-116	FOR 1.6 mm WIRE
	403-20-564	FOR 2.0 mm WIRE
	403-20-332	FOR 2.4 mm WIRE

ITEM	PART #	DESCRIPTION
		<b>TREGASKISS™ TOUGH LOCK™ TAPERED CONTACT TIP</b>
	403-21-30	FOR 0.8 mm WIRE
	403-21-35	FOR 0.9 mm WIRE
	403-21-1.0	FOR 1 mm WIRE
	403-21-45	FOR 1.2 mm WIRE
	403-21-52	FOR 1.3 mm WIRE
	403-21-116	FOR 1.6 mm WIRE
4	404-26	TREGASKISS TOUGH LOCK RETAINING HEAD
6	454-1-2	RETAINING RING ONLY
7	402-16	O-RING ONLY



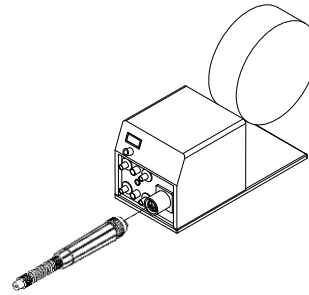
ITEM	PART #	DESCRIPTION
8	402-11	NECK INSULATOR - USE WITH ALL NOZZLES - HEAVY DUTY
9		<b>NECKS (INTERCHANGEABLE BETWEEN ALL 3 AMPERAGES)</b>
	505-45	45 DEGREE - 500 AND 600 AMP
	405-60	60 DEGREE - 400 AMP
	505-60	60 DEGREE - 500 AND 600 AMP
	405-180	STRAIGHT - 400, 500 & 600 AMP
	406-1	SPRING THERMO GUARD - 45° (NOT SHOWN)
	406-2	SPRING THERMO GUARD - 60° (NOT SHOWN)
10		<b>UNICABLE ASSEMBLY</b>
	E413-10	3 m SERVICE - 400 AMP
	E513-10	3 m SERVICE - 500 AMP
	E613-10	4 m SERVICE - 600 AMP
	E413-12	4 m SERVICE - 400 AMP
	E513-12	4 m SERVICE - 500 AMP
	E613-12	4 m SERVICE - 600 AMP
	E413-15	5 m SERVICE - 400 AMP
	E513-15	5 m SERVICE - 500 AMP
	E613-15	5 m SERVICE - 600 AMP
11	410	HANDLE / SPRING GUARD ASSEMBLY - FRONT
12	411-1	SWITCH ONLY
13	411-2	SWITCH HOUSING WITH SCREWS
14	411-3	MOUNTING SCREW (10-24)
	411-3M	MOUNTING SCREW (METRIC M5)
15	425-11	EURO HAND NUT

ITEM	PART #	DESCRIPTION
16	425-8	EURO CONTROL PINS
17	425-20	EURO CONNECTOR BODY ASSEMBLY
	425-9	O-RING FOR EURO BODY ASSEMBLY
18		<b>LINERS</b>
	415-23-15	FOR 0.6 mm WIRE - 5 m
	415-30-15Q	FOR 0.8 mm WIRE - 5 m
	415-35-10Q	FOR 0.9 mm - 1.2 mm WIRE - 3 m
	415-35-15Q	FOR 0.9 mm - 1.2 mm WIRE - 5 m
	415-35-25Q	FOR 0.9 mm - 1.2 mm WIRE - 8 m
	415-35-2	FOR 0.9 mm ALUMINUM WIRE - 5 m
	415-116-10Q	FOR 1.2 mm - 1.6 mm WIRE - 3 m
	415-116-15Q	FOR 1.2 mm - 1.6 mm WIRE - 5 m
	415-116-25Q	FOR 1.2 mm - 1.6 mm WIRE - 8 m
	415-116-2	FOR 1.2 mm - 1.6 mm ALUM. WIRE - 5 m
	415-332-15Q	FOR 2.0 mm - 2.4 mm WIRE - 5 m FLAT WOUND
	415-332-153	FOR 2.0 mm - 2.4 mm WIRE - 5 m ROUND WOUND
	415-332-251	FOR 2.0 mm - 2.4 mm WIRE - 5 m ROUND WOUND
	415-332-25Q	FOR 2.0 mm - 2.4 mm WIRE - 8 m FLAT WOUND
	415-332-15	FOR ALL 2 mm WIRE & 1.6 mm FLUX CORE WIRE
	415-1	LINER O-RING (NOT SHOWN)
		<b>LINER RETAINERS (REQUIRED FOR TREGASKISS QUICK LOAD™ LINERS) - SOLD SEPARATELY</b>
	415-24	LINER RETAINER (3/32" ONLY)
	415-26	LINER RETAINER (.030" - 5/64")
19	412-2	BUTT CONNECTORS
20	425	EURO ASSEMBLY WITH HANDLES
21	412-1	SWITCH LEAD CONNECTOR
	412-3	CONTROL WIRE SHEATH (NOT SHOWN)

# INSTALLING MIG GUN INTO A FEEDER

## For MIG guns with Euro connector:

1. Insert Euro gun to feeder.
2. Thread Euro hand nut clockwise to tighten.
3. Pull handle trigger, to feed.



## GENERAL SAFETY

Before installation or operation of T-Gun MIG Guns, please read the safety precautions listed below.

1. Always wear a properly fitted welding helmet with the proper grade of filter plate and suitable welding gloves.
2. All exposed skin should be covered with flame resistant, protective clothing. **DO NOT WEAR CLOTHING MADE FROM FLAMMABLE SYNTHETIC FIBERS.**
3. Protective screens or barriers should be used to protect others from spatter, flash and glare while welding.
4. Prevent fires by ensuring that hot slag or sparks do not contact combustible solids, liquids or gases.
5. Ensure that operator's head is not too close to the arc and that adequate ventilation is available.
6. Constant repetitive motion may lead to cumulative trauma disorders.
7. Do not touch live electrical parts. The following should be checked to prevent electrical shock:
  - Equipment is adequate for the job, properly grounded and installed according to code.
  - Faulty or damaged equipment is repaired or replaced.
  - Proper operator maintenance is performed to prevent excess spatter accumulation in the nozzle, or the contact tip or other areas of the gun.
  - Electrical insulating components are in place and not damaged. Repair or replace if necessary.
  - Operator and surroundings are not wet.
  - Cables are not wrapped around operator's body.
  - Equipment is off when not in use.
8. CSA Standard W117.2 CODE FOR SAFETY IN WELDING AND CUTTING obtainable from the Canadian Standards Association, Standards Sales, 178 Rexdale Boulevard, Rexdale, Ontario, Canada M9W 1R3.
9. ANSI Standard Z49.1 CODE FOR SAFETY IN WELDING AND CUTTING obtainable from the American National Standards Institute, 1430 Broadway, New York, NY 10018.

### **CALIFORNIA PROPOSITION 65 WARNING**

This product, when used for welding or cutting, produces fumes or gases which contain chemicals known to the State of California to cause birth defects and, in some cases, cancer.

This product contains chemicals, including lead, known to the State of California to cause cancer, and birth defects or other reproductive harm. *Wash hands after use.*

(California Health & Safety Code Section 25249.5 at seq.)



## FOR ADDITIONAL TECHNICAL DATA:

For additional Technical Data, including installation, maintenance, neck dimensions, options, accessories and troubleshooting, please visit the Technical Support section of the Bernard website at [BernardWelds.com](http://BernardWelds.com).



### For Customer Support:

U.S.A 800-946-2281  
International 708-946-2281  
[BernardWelds.com](http://BernardWelds.com)

M019 REV C

09/12