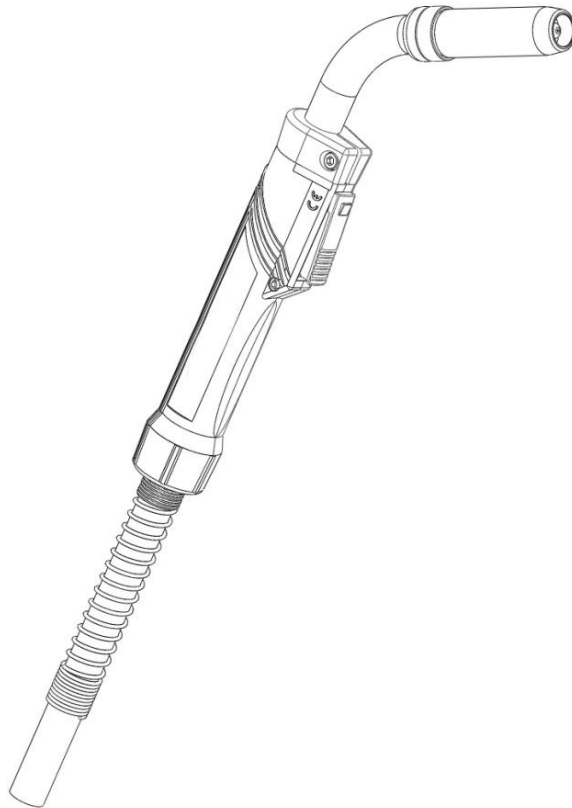




SPEC SHEET

**For 200, 300, and 350 amp Euro
T-Gun™ Semi-Automatic Air-Cooled
MIG Guns**



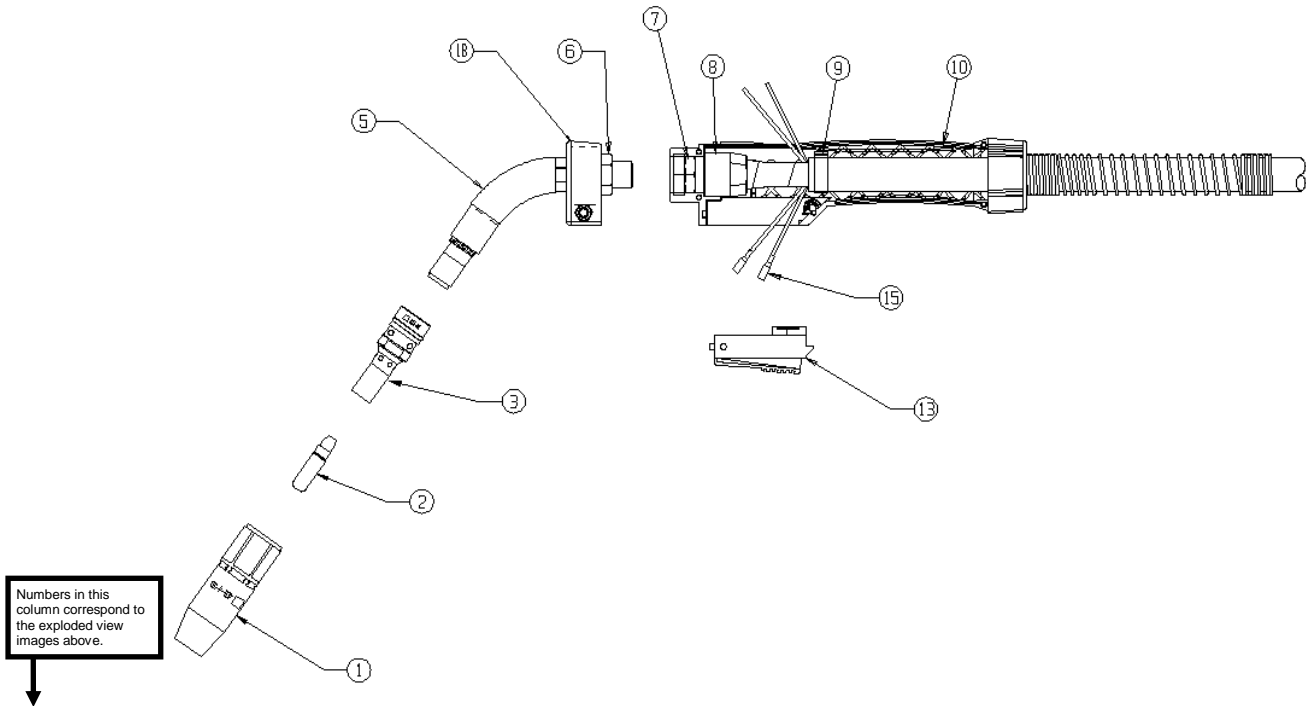
AMPERAGE RATINGS

GUN MODEL	60% DUTY CYCLE	
	100% CO ₂	80% Ar, 20% CO ₂
200 amp Euro	200	150
300 amp Euro	300	250
350 amp Euro	350	300

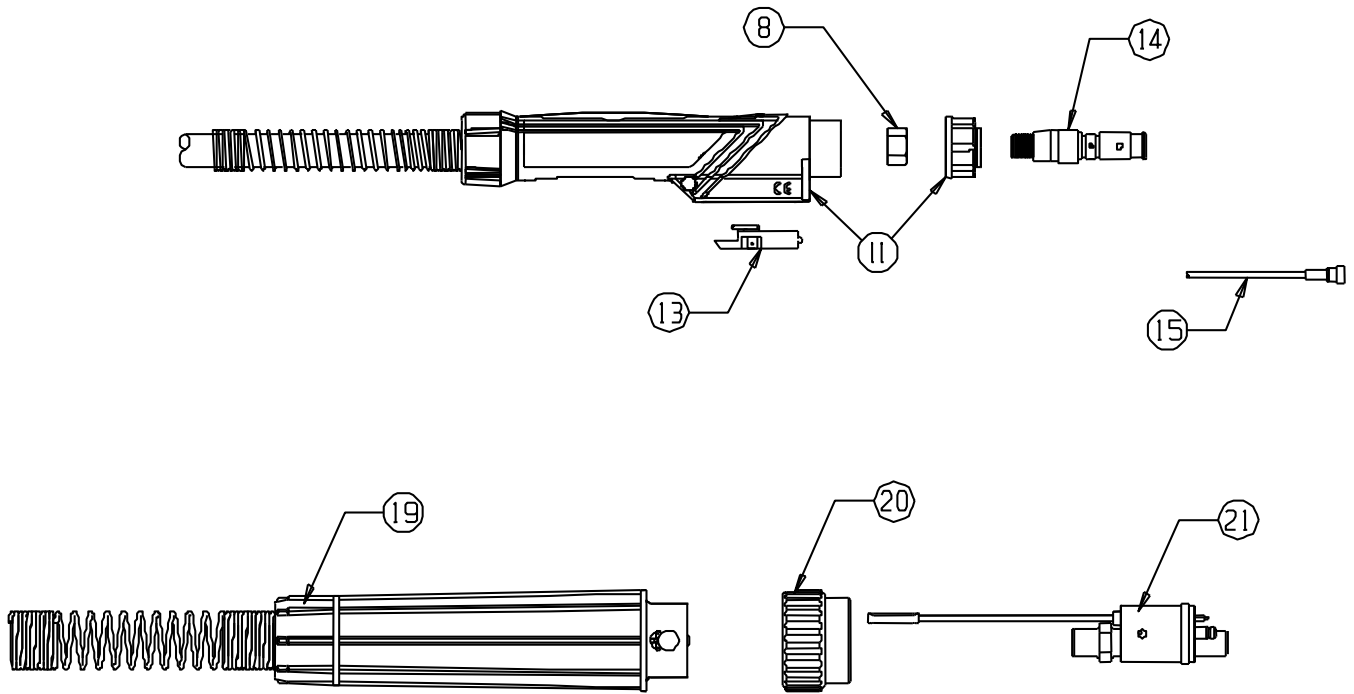
STANDARD PARTS

GUN MODEL	NECK	NOZZLE	RETAINING HEAD	NECK INSULATOR	CONTACT TIPS
200 amp Euro	205-60	401-4-50	404-26	402-5	403-20-xx
300 amp Euro	205-60	401-4-50	404-26	402-5	403-20-xx
350 amp Euro	205-60	401-4-50	404-26	402-5	403-20-xx

EXPLODED VIEW AND PARTS LIST



ITEM	PART #			DESCRIPTION	
	200 amp	300 amp	350 amp		
1	STANDARD NOZZLES				
	401-4-38	401-4-38	401-4-38	3/8" (10 mm) BORE - FLUSH	
	401-4-50	401-4-50	401-4-50	1/2" (13 mm) BORE - 1/2" (3 mm) TIP RECESS	
	401-4-62	401-4-62	401-4-62	5/8" (16 mm) BORE - 1/8" (3 mm) TIP RECESS	
	401-4-75	401-4-75	401-4-75	3/4" (19 mm) BORE - 1/8" (3 mm) TIP RECESS	
				HEAVY DUTY NOZZLES	
		401-5-62	401-5-62	5/8" (16 mm) BORE - 1/4" TIP RECESS	
		401-5-75	401-5-75	3/4" (19 mm) BORE - 1/4" TIP RECESS	
		401-6-50	401-6-50	1/2" (13 mm) BORE - 1/8" TIP RECESS	
		401-6-62	401-6-62	5/8" (16 mm) BORE - 1/8" TIP RECESS	
	401-6-75	401-6-75	3/4" (19 mm) BORE - 1/8" TIP RECESS		
2	STANDARD DUTY TREGAKISS™ TOUGH LOCK™ CONTACT TIPS				
	403-14-23	403-14-23	403-14-23	FOR .023" (0.6 mm) WIRE	
	403-14-30	403-14-30	403-14-30	FOR .030" (0.8 mm) WIRE	
	403-14-35	403-14-35	403-14-35	FOR .035" (0.9 mm) WIRE	
	403-14-1.0	403-14-1.0	403-14-1.0	FOR 1 mm WIRE	
	403-14-45	403-14-45	403-14-45	FOR .045" (1.2 mm) WIRE	
				HEAVY DUTY TREGAKISS TOUGH LOCK CONTACT TIPS	
	403-20-30	403-20-30	403-20-30	FOR .030" (0.8 mm) WIRE	
	403-20-35	403-20-35	403-20-35	FOR .035" (0.9 mm) WIRE	
	403-20-1.0	403-20-1.0	403-20-1.0	FOR 1mm WIRE	
	403-20-45	403-20-45	403-20-45	FOR .045" (1.2 mm) WIRE	
	403-20-364	403-20-364	403-20-364	FOR 3/64" (1.2 mm) WIRE	
	3	404-18	404-18	404-18	TREGAKISS TOUGH LOCK STANDARD DUTY RETAINING HEAD
			404-26	404-26	TREGAKISS TOUGH LOCK HEAVY DUTY RETAINING HEAD
5	402-7	402-11	402-11	NECK INSULATOR	
6	205-60	205-60	205-60	STANDARD NECK - 60°	
	205-45	205-45	205-45	OPTIONAL NECK - 45°	
7	320-6	320-6	320-6	HANDLE LOCK CAP - FRONT	
	320-3	320-3	320-3	HANDLE LOCK CAP - REAR	



ITEM	PART #			DESCRIPTION
	200 amp	300 amp	350 amp	
8	208-2	208-2	208-2	JAM NUT
10				UNICABLE ASSEMBLY
	213-10	250-10	321-10	10' (3.1 m) SERVICE – NOT EURO ASSY
	213-12	250-12	321-12	12' (3.7 m) SERVICE – NOT EURO ASSY
	213-15	250-15	321-15	15' (4.6 m) SERVICE – NOT EURO ASSY
11	320	320	320	HANDLE (FRONT)
12	211-5	211-5	211-5	SWITCH ASSEMBLY
13	216-1	216-1	216-1	CONTROL WIRE ASSEMBLY
14				FEEDER CONNECTIONS
	214	214	214	QUICK CONNECT POWER PIN #4
	214-1	214-1	214-1	MILLER® POWER PIN (ALL MODELS EXCEPT 10 & 30 FEEDERS)
	214-2	214-2	214-2	LINCOLN® POWER PIN
	214-4	214-4	214-4	L-TEC®
	214-13	214-13	214-13	PANASONIC®
	214-12	214-12	214-12	#5 POWER PIN
	414-1	414-1	414-1	O-RING - POWER PIN
15				LINERS
	415-23-15	415-23-15	415-23-15	FOR 0.6 mm WIRE, 5 m LENGTH
	415-30-15	415-30-15	415-30-15	FOR 0.8 mm WIRE, 5 m LENGTH
	415-35-10	415-35-10	415-35-10	FOR 0.9 mm - 1.2 mm WIRE, 3 m LENGTH
	415-35-15	415-35-15	415-35-15	FOR 0.9 mm - 1.2 mm WIRE, 5 m LENGTH
	415-35-2	415-35-2	415-35-2	FOR 0.9 mm ALUM. WIRE, 5 m LENGTH
	415-116-10	415-116-10	415-116-10	FOR 1.2 mm - 1.6 mm WIRE, 3 m LENGTH
	415-116-15	415-116-15	415-116-15	FOR 1.2 mm - 1.6 mm WIRE, 5 m LENGTH
NOT SHOWN	415-116-2	415-116-2	415-116-2	FOR 1.2 mm - 1.6 mm ALUM. WIRE, 5 m LENGTH
	415-1M	415-1M	415-1M	LINER O-RING
16	FEED ADAPTORS (TO BE USED WITH 417 QUICK CONNECT BLOCK)			
17	CONTROL PLUGS (C/W PLUGS LEAD & FEMALE CONNECTORS)			
18	E213-7	E213-7	E313-7	UNICABLE REPAIR KIT - NOT SHOWN
19	425	425	425	COMPLETE EURO ASSEMBLY
20	425-11	425-11	425-11	HAND NUT - NEW STYLE
21	425-20	425-20	425-20	EURO BODY - NEW STYLE NEW EURO ASSEMBLY COMPONENTS AND OLD COMPONENTS ARE NOT COMPATIBLE

INSTALLING MIG GUN INTO A FEEDER

For MIG guns with power pins:

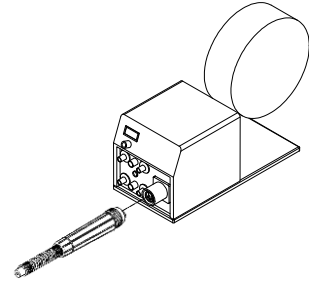
1. Insert power pin to shoulder and secure.
2. Insert control plug into control housing of gun.
3. Insert control plug into feeder.
4. Feed welding wire into power pin by hand and tighten drive rolls.

Note: On Lincoln feeders it is necessary to connect the gas hose to the barbed fitting on the power pin.



For MIG guns with Euro connector:

1. Insert Euro gun to feeder
2. Thread Euro hand nut clockwise to tighten
3. Pull handle trigger, to feed



GENERAL SAFETY

Before installation or operation of T-Gun MIG Guns, please read the safety precautions listed below.

1. Always wear a properly fitted welding helmet with the proper grade of filter plate and suitable welding gloves.
2. All exposed skin should be covered with flame resistant, protective clothing. **DO NOT WEAR CLOTHING MADE FROM FLAMMABLE SYNTHETIC FIBERS.**
3. Protective screens or barriers should be used to protect others from spatter, flash and glare while welding.
4. Prevent fires by ensuring that hot slag or sparks do not contact combustible solids, liquids or gases.
5. Ensure that operator's head is not too close to the arc and that adequate ventilation is available.
6. Constant repetitive motion may lead to cumulative trauma disorders.
7. Do not touch live electrical parts. The following should be checked to prevent electrical shock:
 - Equipment is adequate for the job, properly grounded and installed according to code.
 - Faulty or damaged equipment is repaired or replaced.
 - Proper operator maintenance is performed to prevent excess spatter accumulation in the nozzle, or the contact tip or other areas of the gun.
 - Electrical insulating components are in place and not damaged. Repair or replace if necessary.
 - Operator and his surroundings are not wet.
 - Cables are not wrapped around operator's body.
 - Equipment is off when not in use.
8. CSA Standard W117.2 CODE FOR SAFETY IN WELDING AND CUTTING obtainable from the Canadian Standards Association, Standards Sales, 178 Rexdale Boulevard, Rexdale, Ontario, Canada M9W 1R3.
9. ANSI Standard Z49.1 CODE FOR SAFETY IN WELDING AND CUTTING obtainable from the American National Standards Institute, 1430 Broadway, New York, NY 10018.

CALIFORNIA PROPOSITION 65 WARNING

This product, when used for welding or cutting, produces fumes or gases which contain chemicals known to the State of California to cause birth defects and, in some cases, cancer.

This product contains chemicals, including lead, known to the State of California to cause cancer, and birth defects or other reproductive harm. *Wash hands after use.*

(California Health & Safety Code Section 25249.5 at seq.)



FOR ADDITIONAL TECHNICAL DATA:

For additional Technical Data, including installation, maintenance, neck dimensions, options, accessories and troubleshooting, please visit the Technical Support section of the Bernard website at BernardWelds.com.



For Customer Support:

U.S.A 800-946-2281
International 708-946-2281
BernardWelds.com