



SPEC SHEET

For 350, 450 and 550 amp
**T-Gun™ Semi-Automatic Air-Cooled
 MIG Guns**



AMPERAGE RATINGS

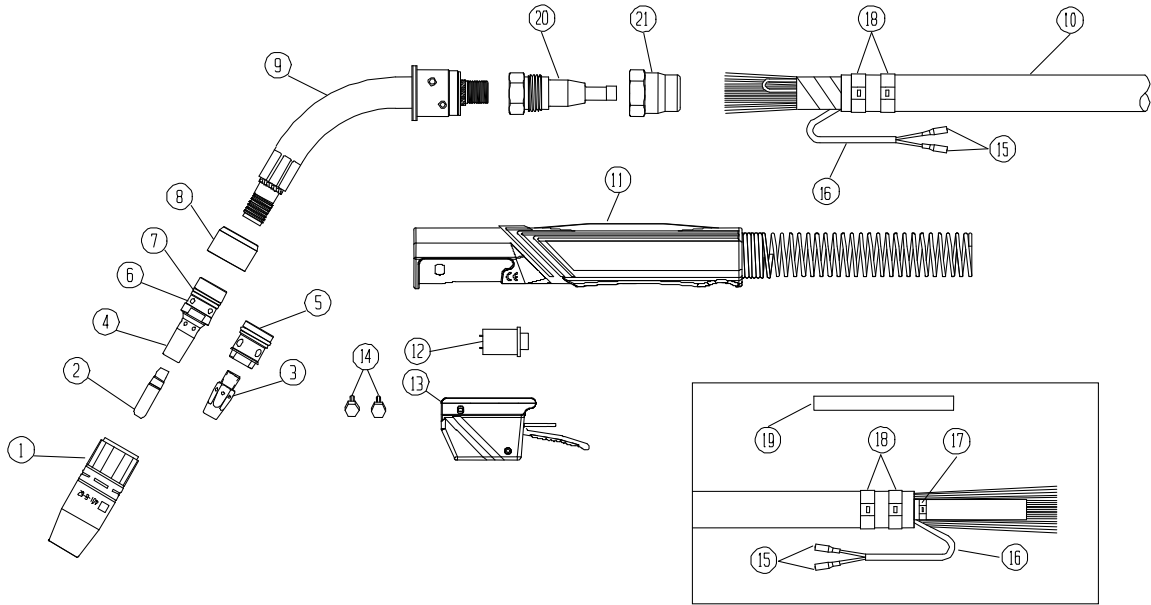
GUN MODEL	60% DUTY CYCLE – MIXED GASES OR 100% DUTY CYCLE – CO ₂
350 amp	350
450 amp	450
550 amp	550

NOTE: Ratings are based on tests that comply with IEC 60974-4 standards.

STANDARD PARTS

GUN MODEL	NECK	NOZZLE	RETAINING HEAD	NECK INSULATOR	CONTACT TIPS
350 amp	305-60	401-6-62	404-26	402-11	403-20-xx
450 amp	405-60	401-6-62	404-26	402-11	403-20-xx
550 amp	505-60	401-5-75	404-26	402-11	403-20-xx

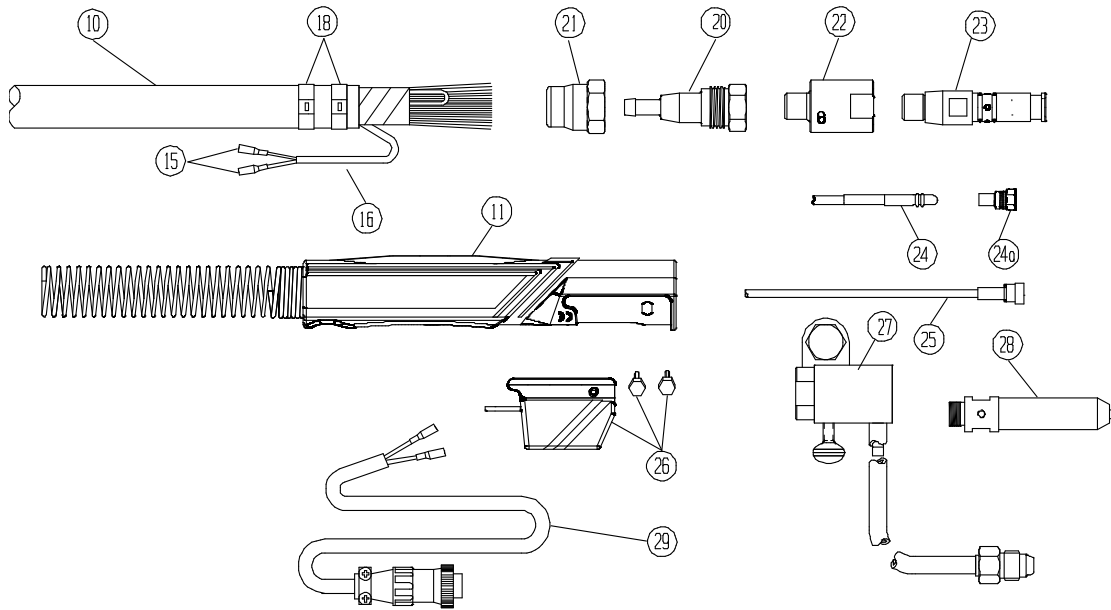
EXPLODED VIEW AND PARTS LIST



Numbers in this column correspond to the exploded view images above.

PART NUMBER	PART NUMBERS			DESCRIPTION
	350 amp	450 amp	550 amp	
1				STANDARD TREGAKISS NOZZLES (SELF-INSULATED)
	401-40-38	401-40-38	401-40-38	3/8" (10 mm) BORE - 1/16" (1.5 mm) TIP RECESS (BRASS)
	401-4-38	401-4-38	401-4-38	3/8" (10 mm) BORE - FLUSH TIP
	401-4-50	401-4-50	401-4-50	1/2" (13 mm) BORE - 1/8" (3 mm) TIP RECESS
	401-4-62	401-4-62	401-4-62	5/8" (16 mm) BORE - 1/8" (3 mm) TIP RECESS
	401-4-75	401-4-75	401-4-75	3/4" (19 mm) BORE - 1/8" (3 mm) TIP RECESS
				SHORT ARC NOZZLE
	401-8-62	401-8-62	401-8-62	5/8" (16 mm) BORE - 1/8" (3 mm) TIP STICKOUT
				HEAVY-DUTY NOZZLES (SELF-INSULATED)
	401-5-62	401-5-62	401-5-62	5/8" (16 mm) BORE - 1/4" (6 mm) TIP RECESS
	401-5-75	401-5-75	401-5-75	3/4" (19 mm) BORE - 1/4" (6 mm) TIP RECESS
	401-6-50	401-6-50	401-6-50	1/2" (13 mm) BORE - 1/8" (3 mm) TIP RECESS
	401-6-62	401-6-62	401-6-62	5/8" (16 mm) BORE - 1/8" (3 mm) TIP RECESS
	401-6-75	401-6-75	401-6-75	3/4" (19 mm) BORE - 1/8" (3 mm) TIP RECESS
	401-7-62	401-7-62	401-7-62	5/8" (16 mm) BORE - 1/4" (6 mm) TIP RECESS (BRASS)
	401-7-87	401-7-87	401-7-87	7/8" (22 mm) BORE - 1/4" (6 mm) TIP RECESS (BRASS)
2				STANDARD DUTY TREGAKISS™ TOUGH LOCK™ CONTACT TIP - 1/4" (6.4 mm) O.D.
	403-14-23	403-14-23	403-14-23	FOR .023" (0.6 mm) WIRE
	403-14-30	403-14-30	403-14-30	FOR .030" (0.8 mm) WIRE
	403-14-35	403-14-35	403-14-35	FOR .035" (0.9 mm) WIRE
	403-14-10	403-14-10	403-14-10	FOR 1 mm WIRE
	403-14-45	403-14-45	403-14-45	FOR .045" (1.2 mm) WIRE
				HEAVY-DUTY TREGAKISS TOUGH LOCK CONTACT TIPS - 5/16" (7.9 mm) O.D.
	403-20-30	403-20-30	403-20-30	FOR .030" (0.8 mm) WIRE
	403-20-35	403-20-35	403-20-35	FOR .035" (0.9 mm) WIRE
	403-20-10	403-20-10	403-20-10	FOR 1 mm WIRE
	403-20-45	403-20-45	403-20-45	FOR .045" (1.2 mm) WIRE
	403-20-364	403-20-364	403-20-364	FOR 3/64" (1.2 mm) WIRE
	403-20-1.4	403-20-1.4	403-20-1.4	FOR 1.4 mm WIRE
	403-20-52	403-20-52	403-20-52	FOR .052" (1.3 mm) WIRE
	403-20-116	403-20-116	403-20-116	FOR 1/16" (1.6 mm) WIRE
	403-20-564	403-20-564	403-20-564	FOR 5/64" (2.0 mm) WIRE
	403-20-332	403-20-332	403-20-332	FOR 3/32" (2.4 mm) WIRE
				HEAVY DUTY TREGAKISS TOUGH LOCK TAPERED TIPS - 5/16" (7.9 mm) O.D.
	403-21-30	403-21-30	403-21-30	FOR .030" (0.8 mm) WIRE
	403-21-35	403-21-35	403-21-35	FOR .035" (0.9 mm) WIRE
	403-21-45	403-21-45	403-21-45	FOR .045" (1.2 mm) WIRE
4				RETAINING HEAD - TREGAKISS TOUGH LOCK
	404-18	404-18	404-18	TREGAKISS TOUGH LOCK RETAINING HEAD FOR STANDARD DUTY TIPS
	404-26	404-26	404-26	TREGAKISS TOUGH LOCK RETAINING HEAD FOR HEAVY DUTY TIPS
6	454-1-2	454-1-2	454-1-2	RETAINING RING ONLY
7	402-16	402-16	402-16	O-RING ONLY
8	402-11	402-11	402-11	NECK INSULATOR

PART NUMBER	PART NUMBERS			DESCRIPTION
	350 amp	450 amp	550 amp	
9				TREGAKISS NECKS (INTERCHANGEABLE BETWEEN ALL 3 AMPERAGES)
	305-45	405-45	505-45	45 DEGREE
	305-60	405-60	505-60	60 DEGREE
	305-180	405-180	505-180	180 DEGREE (STRAIGHT)
	406-2	406-2	506-1	SPRING THERMO GUARD - 45° (NOT SHOWN)
	406-1	406-1	506-1	SPRING THERMO GUARD - 60° and 22° (NOT SHOWN)
	405-45F	405-45F	405-45F	45 DEGREE - GASLESS
	405-60F	405-60F	405-60F	60 DEGREE - GASLESS
	405-80F	405-80F	405-80F	80 DEGREE - GASLESS
	505-45F	505-45F	505-45F	45 DEGREE - GASLESS
	NA	NA	505-60F	60 DEGREE - GASLESS
	NA	NA	505-80F	80 DEGREE - GASLESS
10				UNICABLE ASSEMBLY (INCLUDES HANDLE/SPRING ASSEMBLY)
	313-10	413-10	513-10	10' (3 m) SERVICE
	313-12	413-12	513-12	12' (4 m) SERVICE
	313-15	413-15	513-15	15' (5 m) SERVICE
	313-20	413-20	513-20	20' (6 m) SERVICE
	313-25	413-25	513-25	25' (8 m) SERVICE
11	410	410	410	HANDLE/SPRING GUARD ASSEMBLY - FRONT AND REAR
12	411-1	411-1	411-1	SWITCH ONLY
13	411-2	411-2	411-2	SWITCH HOUSING WITH SCREWS
	411-4	411-4	411-4	SWITCH HOUSING - LOCK-ON TRIGGER
	411-11	411-11	411-11	SWITCH HOUSING DUAL SCHEDULE - 2 POSITION
	411-12	411-12	411-12	SWITCH HOUSING DUAL SCHEDULE - TOGGLE STYLE
	411-13	411-13	411-13	SWITCH HOUSING D/S 2 POSITION - LOCK-ON
	411-23	411-23	411-23	SWITCH HOUSING - EXTENDED TRIGGER
	411-24	411-24	411-24	SWITCH HOUSING - EXTENDED LOCK-ON TRIGGER
14	411-3M	411-3M	411-3M	MOUNTING SCREWS (METRIC M5)
	313-8	413-7	513-7	UNICABLE REPAIR KIT (INCLUDES PARTS 15 - 21)
15	412-1	412-1	412-1	SWITCH LEAD CONNECTOR
16	412-3	412-3	412-3	SHEATH
17	413-5	413-5	413-5	SUPPORT TUBE CLAMP
18	313-3	513-1	523-1	OUTER JACKET CLAMP
19	413-4	413-4	413-4	SUPPORT TUBE
20	308	408	408	CONNECTOR CONE
21	509	409	509	CONE NUT



	PART #			DESCRIPTION
	350 amp	450 amp	550 amp	
22	414-400	414-400	414-400	POWER PIN BLOCK
23				POWER PINS
	214	214	214	TWECO® #4
	214-6-116	214-6-116	214-6-116	MILLER® 1/16"
	214-6-332	214-6-332	214-6-332	MILLER 3/32"
	214-9	214-9	214-9	MILLER GUIDE CAP FOR ALUMINUM
	214-2	214-2	214-2	LINCOLN®
	214-4	214-4	214-4	L-TEC® - MT SERIES
	214-12	214-12	214-12	TWECO #5
	214-13	214-13	214-13	PANASONIC®
24				TREGASKISS™ QUICK LOAD™ LINER (LINER RETAINER NOT INCLUDED)
24a	415-24	415-24	415-24	QUICK LOAD LINER RETAINER (3/32" ONLY)
	415-26	415-26	415-26	QUICK LOAD LINER RETAINER
	415-23-15Q	415-23-15Q	415-23-15Q	FOR .023" (0.6 mm) WIRE - 15' (5 m)
	415-30-15Q	415-30-15Q	415-30-15Q	FOR .030" (0.7 mm) WIRE - 15' (5 m)
	415-35-10Q	415-35-10Q	415-35-10Q	FOR .035" - .045" (0.9 mm - 1.2 mm) WIRE - 10' (3 m)
	415-35-15Q	415-35-15Q	415-35-15Q	FOR .035" - .045" (0.9 mm - 1.2 mm) WIRE - 15' (5 m)
	415-35-25Q	415-35-25Q	415-35-25Q	FOR .035" - .045" (0.9 mm - 1.2 mm) WIRE - 25' (8 m)
	415-116-10Q	415-116-10Q	415-116-10Q	FOR .045" - 1/16" (1.2 mm - 1.6 mm) WIRE - 10' (3 m)
	415-116-15Q	415-116-15Q	415-116-15Q	FOR .045" - 1/16" (1.2 mm - 1.6 mm) WIRE - 15' (5 m)
	415-116-25Q	415-116-25Q	415-116-25Q	FOR .045" - 1/16" (1.2 mm - 1.6 mm) WIRE - 25' (8 m)
	415-564-15Q	415-564-15Q	415-564-15Q	FOR 1/16" - 5/64" (1.5 mm - 1.9 mm) WIRE - 15' (5 m)
	415-332-15Q	415-332-15Q	415-332-15Q	FOR .078" - 3/32" (1.9 mm - 2.3 mm) WIRE - 15' (5 m)
	415-332-25Q	415-332-25Q	415-332-25Q	FOR .078" - 3/32" (1.9 mm - 2.3 mm) WIRE - 25' (8 m)
25				TREGASKISS CONVENTIONAL LINER
	415-23-15	415-23-15	415-23-15	FOR .023" (0.6 mm) WIRE - 15' (5 m)
	415-35-2	415-35-2	415-35-2	FOR .035" (0.9 mm) ALUMINUM WIRE - 15' (5 m)
	415-116-2	415-116-2	415-116-2	FOR 3/64" - 1/16" (1.2 mm - 1.6 mm) ALUMINUM WIRE - 15' (5 m)
	415-1	415-1	415-1	LINER O-RING (NOT SHOWN)
	416-13	416-13	416-13	CONTROL HOUSING WITH DUAL SCHEDULE OPTION
26	416-5	416-5	416-5	CONTROL HOUSING WITH SCREWS
27				FEEDER ADAPTORS (SOLD SEPARATELY)
	417	417	417	QUICK CONNECT BLOCK ASSEMBLY (TWECO #4)
	417-50	417-50	417-50	QUICK CONNECT BLOCK ASSEMBLY (EURO)
	417-60	417-60	417-60	QUICK CONNECT BLOCK ASSEMBLY (TWECO #5)
	417-1	417-1	417-1	RETAINING SCREW
	417-2	417-2	417-2	GAS HOSE ADAPTOR
	417-3	417-3	417-3	POWER BOLT
	417-4	417-4	417-4	GAS HOSE & NIPPLE

	PART #			DESCRIPTION
	350 amp	450 amp	550 amp	
28				FEEDER ADAPTOR PINS
	418-4	418-4	418-4	HOBART® 27
	418-5	418-5	418-5	LINCOLN LN4, LN5, LINDE SWM 31, 3A & 32A
	418-6	418-6	418-6	LINCOLN LN7, 8 & 9, LN 25 SUITCASE, LN22
	418-7	418-7	418-7	LINDE® SWM-14
	418-8	418-8	418-8	LINDE 35 SWM-23
	418-9	418-9	418-9	MILLER 10A, 30A (MILLERMATIC 35S FEEDER)
	418-10	418-10	418-10	MILLER 52E, 54E, S21, S22 SERIES AND MILLERMATIC 200 & 250, 60 SERIES
	418-14	418-14	418-14	OTC DAIHEN®
	418-21	418-21	418-21	GILLILAND®
	418-27	418-27	418-27	PANASONIC
	418-28	418-28	418-28	TWECO #4 PIN
	418-29	418-29	418-29	TWECO #5 PIN
	418-30	418-30	418-30	OXO™
	418-33	418-33	418-33	KOBELCO®
	418-35	418-35	418-35	KOBELCO
29				CONTROL PLUGS (SOLD SEPARATELY)
	419-2	419-2	419-2	HOBART
	419-4	419-4	419-4	MILLER (52E, 54E)
	419-6	419-6	419-6	LINCOLN (LN7, 8, 9) NA2
	419-7	419-7	419-7	MILLER (10E, 30E) & LINDE (SWM-35)
	419-8	419-8	419-8	DIPSTICK 160, 200, HOBART HANDLER, LINCOLN SP-100
	419-10	419-10	419-10	MILLER DUAL SCHEDULE
				ACCESSORIES (NOT SHOWN)
	NA	406-1	506-1	NECK GUARD FOR 60 DEGREE NECK
	NA	406-2	NA	NECK GUARD FOR 45 DEGREE NECK
	NA	422	NA	MIG GUN HANGER
	NA	421	NA	HEAT SHIELD (SOLD WITH GUN HANGER)
	NA	421-1	NA	HEAT SHIELD MOUNTING SCREWS

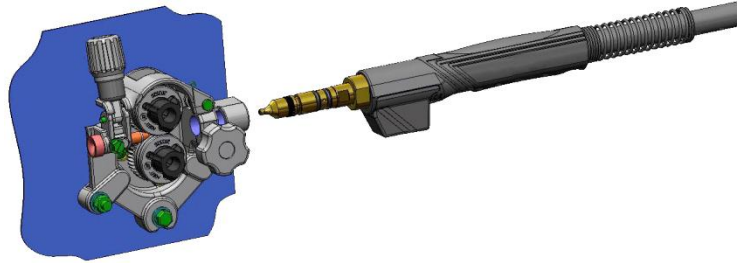
ESAB and L-Tec are trademarks of ESAB AB.
 Kobelco is a trademark of Kobe Steel, Ltd.
 Lincoln is a trademark of the Lincoln Electric Company.
 Linde is a trademark of Linde AG.
 OTC is a trademark of the SPX Corporation.
 Panasonic is a trademark of Matsushita Electric Industrial Co., Ltd.
 Tweco is a trademark of Victor Technologies.

INSTALLING MIG GUN INTO A FEEDER

For most power pins

1. Insert power pin to shoulder and secure.
2. Insert control plug to control housing of gun.
3. Insert control plug into feeder.
4. Feed welding wire into power pin by hand and tighten drive rolls.

Note: On Lincoln feeders it is necessary to connect the gas hose to the barbed fitting on the power pin.



GENERAL SAFETY

Before installation or operation of T-Gun MIG Guns, please read the safety precautions listed below.

1. Always wear a properly fitted welding helmet with the proper grade of filter plate and suitable welding gloves.
2. All exposed skin should be covered with flame resistant, protective clothing. **DO NOT WEAR CLOTHING MADE FROM FLAMMABLE SYNTHETIC FIBERS.**
3. Protective screens or barriers should be used to protect others from spatter, flash and glare while welding.
4. Prevent fires by ensuring that hot slag or sparks do not contact combustible solids, liquids or gases.
5. Ensure that operator's head is not too close to the arc and that adequate ventilation is available.
6. Constant repetitive motion may lead to cumulative trauma disorders.
7. Do not touch live electrical parts. The following should be checked to prevent electrical shock:
 - Equipment is adequate for the job, properly grounded and installed according to code.
 - Faulty or damaged equipment is repaired or replaced.
 - Proper operator maintenance is performed to prevent excess spatter accumulation in the nozzle, or the contact tip or other areas of the gun.
 - Electrical insulating components are in place and not damaged. Repair or replace if necessary.
 - Operator and his surroundings are not wet.
 - Cables are not wrapped around operator's body.
 - Equipment is off when not in use.
8. CSA Standard W117.2 CODE FOR SAFETY IN WELDING AND CUTTING obtainable from the Canadian Standards Association, Standards Sales, 178 Rexdale Boulevard, Rexdale, Ontario, Canada M9W 1R3.
9. ANSI Standard Z49.1 CODE FOR SAFETY IN WELDING AND CUTTING obtainable from the American National Standards Institute, 1430 Broadway, New York, NY 10018.

CALIFORNIA PROPOSITION 65 WARNING

This product, when used for welding or cutting, produces fumes or gases which contain chemicals known to the State of California to cause birth defects and, in some cases, cancer.

This product contains chemicals, including lead, known to the State of California to cause cancer, and birth defects or other reproductive harm. *Wash hands after use.*

(California Health & Safety Code Section 25249.5 at seq.)



FOR ADDITIONAL TECHNICAL DATA:

For additional Technical Data, including installation, maintenance, neck dimensions, options, accessories and troubleshooting, please visit the Technical Support section of the Bernard website at BernardWelds.com.



For Customer Support:

U.S.A 800-946-2281
International 708-946-2281
BernardWelds.com