

# TOUGH GUN® CA3

## Robotic Air-Cooled MIG Gun

Issued April 2024 • Index No. CA3/4.0

**MIG (GMAW)**   
**Robotic Welding**

### Quick Specs

#### Duty Cycle Rating

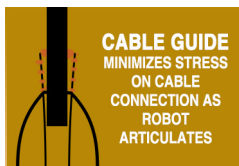
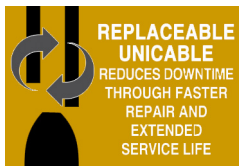
100%: 385 amp with Mixed Gases  
Ratings are based on tests that comply with IEC 60974-7 standards

#### Processes

MIG (GMAW) Welding

#### Robots

ABB®, Yaskawa® Motoman®, FANUC®,  
Kawasaki®, KUKA®, Panasonic®, OTC  
Daihen®, COMAU®, Reis®, Universal  
Robots



Designed for high-volume production environments, the TOUGH GUN® CA3 Robotic Air-Cooled MIG Gun combines the most valuable product features of our TOUGH GUN G1 and G2 Series platforms, along with performance improvements in our unicable technology that extends service life.

Fully configurable, TOUGH GUN CA3 MIG Guns are engineered for precision, durability, accuracy, repeatability, minimal downtime and fast and easy maintenance.



- Extended unicable service life due to its dual layer outer jacket: the outside layer resists ultraviolet radiation and abrasion while the inside layer resists thermal fatiguing
- Reduced costs and downtime due to new replaceable unicable
- Clutch and solid mount models available

- Additional standard neck and mounting arm options expand tool center point options and working envelopes
- Replacement for TOUGH GUN G1 Series MIG Guns with no effect on TCP\*
- Wire Brake, Air Blast and TOUGH GUN I.C.E.™ Technology are available options

\*An increase to the length of the gun housing was necessary to accommodate the added features and benefits. Verification of tooling or fixture clearance may be required.

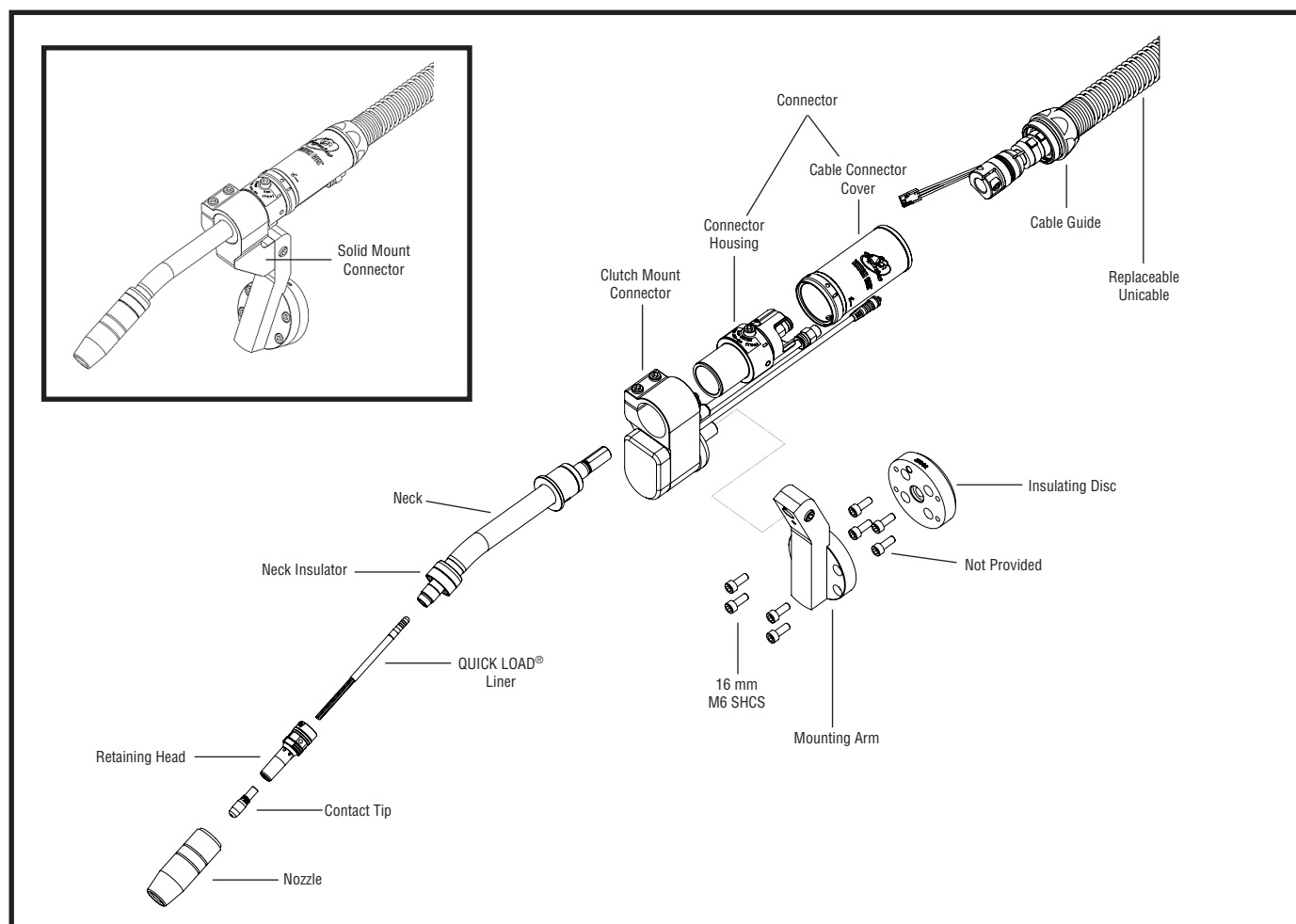


#### Tregaskiss

2570 North Talbot Road  
Windsor, Ontario N0R 1L0  
Canada

Phone: 1-855-MIGWELD (644-9353) (US & Canada)  
+1-519-737-3000 (International)  
Fax: 519-737-1530  
For more information, visit us at [Tregaskiss.com](http://Tregaskiss.com)

# System Components



## Know Your Options

### What's the difference between clutch and solid mount?

A clutch mount is designed to trigger an emergency stop in the event of a robotic collision, whereas a solid mount is not equipped with this functionality. Although many of today's robots are equipped with independent collision detection software and may not require this functionality in a robotic MIG gun, this option is sometimes selected during gun configuration as an additional safeguard.

### Wire Brake

Wire brake holds wire to a consistent stick out to allow a repeatable tool center point (TCP) for touch sensing / seam tracking while the torch articulates. Selecting the wire brake option when configuring a gun will impact TCP. 40-60 psi maximum air supply is required for proper operation. Wire brake is available for wire sizes between 0.030" and 1/16", and requires the use of a jump liner (for use with conventional liners). This option is not compatible with QUICK LOAD® Liners or the QUICK LOAD Liner AutoLength™ System.

### Air Blast

Air blast utilizes compressed shop air to clear loose debris from front-end consumables thereby reducing the frequency of nozzle cleaning. 80-100 psi maximum air supply required for proper operation. This option is not available for TOUGH GUN® TA3 Robotic Air-Cooled MIG Guns for FANUC® robots equipped with TOUGH GUN I.C.E.™ Technology.

### TOUGH GUN I.C.E.™ Technology

This technology boosts the duty cycle of our already highly robust air-cooled TOUGH GUN MIG Guns by providing water-cooled benefits through our I.C.E. (Integrated Cooling Enhancer) component. This component circulates water at the nozzle, keeping TOUGH LOCK® Consumables running cooler and lasting longer. In the TOUGH GUN TA3 Robotic MIG Gun Series, this option is available only for FANUC® and ABB® robots. TOUGH GUN I.C.E. Technology is not compatible with TOUGH ACCESS™ Consumables.

### AccuLock™ R Consumables



Eliminate contact tip cross-threading issues with new AccuLock R Consumables. These new consumables are designed for increased tip life, which can reduce replacement

frequency and related downtime. AccuLock HDP Contact Tips can increase life by an additional 6-10x longer in pulse welding applications. And in most cases, your current tip and diffuser can be replaced with no impact to Tool Center Point (TCP), making this upgrade low effort, low risk, and high payoff.

### QUICK LOAD® Liners



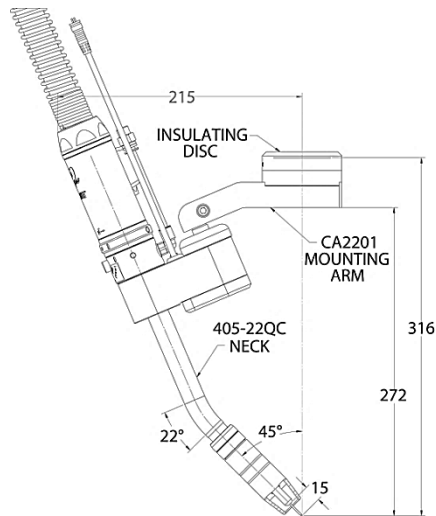
The QUICK LOAD Liner System loads from the front of the MIG gun, and requires less than half the time and effort for replacement when compared with conventional liners. These liners interface with a QUICK LOAD Liner Retainer that is seated within the power pin of the gun on first use. QUICK LOAD Liners come standard on TOUGH GUN Robotic MIG Guns

unless wire brake is a selected option. Available for wire sizes between 0.023" and 3/32" and in lengths of up to 15 feet for robotic applications.

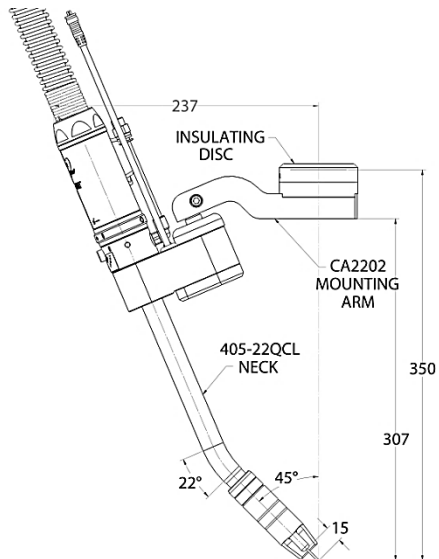
# Gun Configurations

**NOTE:** For Center Of Mass information, please visit [Tregaskiss.com/CA3](http://Tregaskiss.com/CA3)

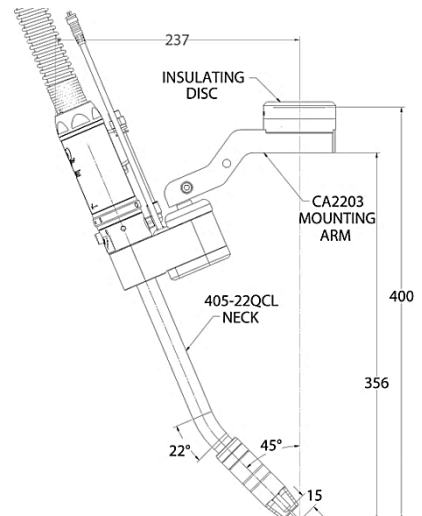
## Standard Configurations – 22 Degree Necks



316 mm (12.44") TCP,  
Neck 405-22QC

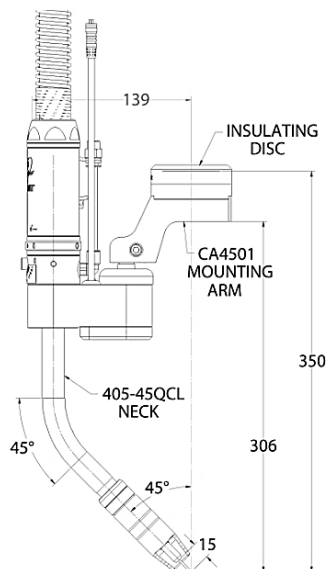


350 mm (13.79") TCP,  
Neck 405-22QCL

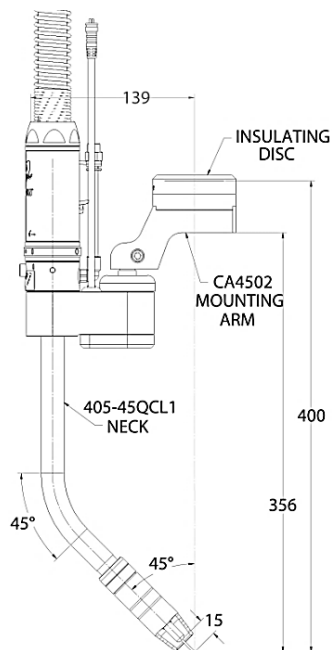


400 mm (15.75") TCP,  
Neck 405-22QCL

## Standard Configurations – 45 Degree Necks



350 mm (13.78") TCP,  
Neck 405-45QCL

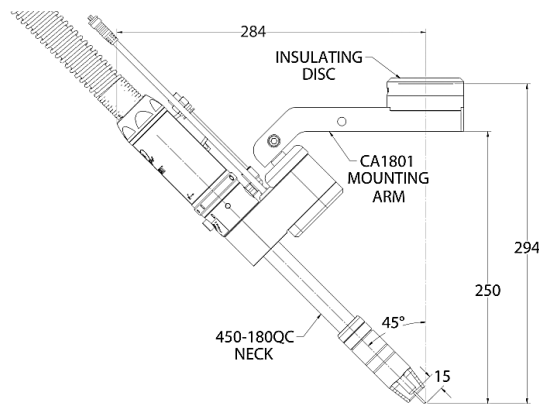


400 mm (15.75") TCP,  
Neck 405-45QCL1

## Gun Configurations *(Continued)*

**NOTE:** For Center Of Mass information, please visit [Tregaskiss.com/CA3](http://Tregaskiss.com/CA3)

### Standard Configurations – 180 Degree Necks



294 mm (11.57") TCP,  
Neck 405-180QC

## Consumable Options

### AccuLock™ Heavy Duty (HD) Copper Contact Tips

<b>T-A030CH*</b>	for 0.030" (0.8 mm) wire; qty. 10	<b>T-A062CH</b>	for 1/16" (1.6 mm) wire; qty. 10
<b>T-A035CH*</b>	for 0.035" (0.9 mm) wire; qty. 10	<b>T-A072CH</b>	for 0.070" (1.8 mm) wire; qty. 10
<b>T-A039CH*</b>	for 0.039" (1.0 mm) wire; qty. 10	<b>T-A078CH</b>	for 5/64" (2.0 mm) wire; qty. 10
<b>T-A045CH*</b>	for 0.045" (1.2 mm) wire; qty. 10	<b>T-A094CH</b>	for 3/32" (2.4 mm) wire; qty. 10
<b>T-A052CH*</b>	for 0.052" (1.3 mm) wire; qty. 10		

*NOTE: add "-100" to the end of the above HD copper contact tip part numbers for quantities of 100.*

*\*add "-1000" to the end of the above part numbers for quantities of 1000.*

### AccuLock Heavy Duty (HD) Chrome Zirconium Contact Tips

<b>T-A030ZH</b>	for 0.030" (0.8 mm) wire; qty. 10	<b>T-A039ZH</b>	for 0.039" (1.0 mm) wire; qty. 10
<b>T-A035ZH</b>	for 0.035" (0.9 mm) wire; qty. 10	<b>T-A045ZH</b>	for 0.045" (1.2 mm) wire; qty. 10

*NOTE: add "-100" to the end of the above HD chrome zirconium contact tip part numbers for quantities of 100.*

### AccuLock HDP Contact Tips

<b>T-A035WH</b>	for 0.035" (0.9 mm) wire; qty. 10	<b>T-A045WH</b>	for 0.045" (1.2 mm) wire; qty. 10
<b>T-A039WH</b>	for 0.039" (1.0 mm) wire; qty. 10	<b>T-A052WH</b>	for 0.052" (1.3 mm) wire; qty. 10

*NOTE: add "-100" to the end of the above HDP contact tip part numbers for quantities of 100.*

### AccuLock Teach Pointers (used for robotic programming)

<b>T-A001TP</b>	Adjustable teach pointer	<b>T-A075TP</b>	Teach pointer, 3/4" CTWD
<b>T-A050TP</b>	Teach pointer, 1/2" CTWD	<b>T-A10MTP</b>	Teach pointer, 10 mm CTWD
<b>T-A062TP</b>	Teach pointer, 5/8" CTWD	<b>T-A15MTP</b>	Teach pointer, 15 mm CTWD

### AccuLock R Gas Diffusers

<b>D-ATTH</b>	Gas diffuser, thread-on, AccuLock R	<b>D-ATSH</b>	Gas diffuser, slip-on, AccuLock R
---------------	-------------------------------------	---------------	-----------------------------------

*NOTE: add "-100" to the end of the above gas diffuser part numbers for quantities of 100.*

### TOUGH LOCK® Heavy Duty (HD) Contact Tips

<b>403-20-30</b>	for 0.030" (0.8 mm) wire	<b>403-20-1.4</b>	for 0.055" (1.4 mm) wire
<b>403-20-35</b>	for 0.035" (0.9 mm) wire	<b>403-20-116</b>	for 1/16" (1.6 mm) wire
<b>403-20-1.0</b>	for 0.040" (1.0 mm) wire	<b>403-20-1.8</b>	for 0.070" (1.8 mm) wire
<b>403-20-45</b>	for 0.045" (1.2 mm) wire	<b>403-20-78</b>	for 0.078" (2.0 mm) wire
<b>403-20-364</b>	for 3/64" (1.2 mm) wire	<b>403-20-564</b>	for 5/64" (2.0 mm) wire
<b>403-20-52</b>	for 0.052" (1.3 mm) wire	<b>403-20-332</b>	for 3/32" (2.4 mm) wire

### TOUGH LOCK Heavy Duty Tapered Contact Tips

<b>403-21-30</b>	for 0.030" (0.8 mm) wire	<b>403-21-45</b>	for 0.045" (1.2 mm) wire
<b>403-21-35</b>	for 0.035" (0.9 mm) wire	<b>403-21-52</b>	for 0.052" (1.3 mm) wire
<b>403-21-1.0</b>	for 0.040" (1.0 mm) wire	<b>403-21-116</b>	for 1/16" (1.6 mm) wire

## Consumable Options *(Continued)*

### TOUGH LOCK Extended Life Heavy Duty (EHD) Contact Tips

<b>403-27-30</b>	for 0.030" (0.8 mm) wire	<b>403-27-45</b>	for 0.045" (1.2 mm) wire
<b>403-27-35</b>	for 0.035" (0.9 mm) wire	<b>403-27-364</b>	for 3/64" (1.2 mm) wire
<b>403-27-1.0</b>	for 0.040" (1.0 mm) wire		

### TOUGH LOCK Standard Duty (SD) Contact Tips

<b>403-14-30</b>	for 0.030" (0.8 mm) wire	<b>403-14-45</b>	for 0.045" (1.2 mm) wire
<b>403-14-35</b>	for 0.035" (0.9 mm) wire		

### TOUGH LOCK Standard Duty Tapered Contact Tips

<b>403-12-30</b>	for 0.030" (0.8 mm) wire	<b>403-12-1.0</b>	for 0.040" (1.0 mm) wire
<b>403-12-35</b>	for 0.035" (0.9 mm) wire	<b>403-12-45</b>	for 0.045" (1.2 mm) wire

### TOUGH LOCK Teach Pointers (used for robotic programming)

<b>403-20-01</b>	Adjustable teach pointer	<b>403-20-075</b>	Teach pointer, 3/4" CTWD
<b>403-20-05</b>	Teach pointer, 1/2" CTWD	<b>403-20-10mm</b>	Teach pointer, 10 mm CTWD
<b>403-20-062</b>	Teach pointer, 5/8" CTWD	<b>403-20-15mm</b>	Teach pointer, 15 mm CTWD

### TOUGH LOCK Retaining Heads

<b>404-18</b>	SD – retaining head for slip-on nozzles	<b>404-32</b>	HD – retaining head for slip-on nozzles
		<b>404-52</b>	HD – retaining head for thread-on nozzles

### Nozzles

Part Number	Description	Style	Compatible Consumables Series	
			TOUGH LOCK	AccuLock R
<b>401-6-62</b>	HD - 5/8" bore, 1/8" recess (copper)	Slip-on	<b>X</b>	<b>X</b>
<b>401-5-62</b>	HD - 5/8" bore, 1/4" recess (copper)	Slip-on	<b>X</b>	-
<b>401-6-50</b>	HD - 1/2" bore, 1/8" recess (copper)	Slip-on	<b>X</b>	-
<b>401-81-62</b>	HD - 5/8" bore, 1/8" stick out (copper)	Slip-on	<b>X</b>	<b>X</b>
<b>401-8-62</b>	SD - 5/8" bore, 1/8" stick out (copper)	Slip-on	<b>X</b>	<b>X</b>
<b>401-42-50</b>	SD - 1/2" bore, 1/8" recess (bottleneck, brass)	Slip-on	<b>X</b>	-
<b>401-48-50</b>	SD - 1/2" bore, 1/8" stick out (bottleneck, brass)	Slip-on	<b>X</b>	-
<b>401-48-62</b>	HD - 5/8" bore, flush tip (bottleneck, copper)	Slip-on	<b>X</b>	<b>X</b>
<b>401-71-62</b>	HD - 5/8" bore, 1/8" recess (brass), straight bore	Slip-on	-	<b>X</b>
<b>401-87-62</b>	HD - 5/8" bore, 1/8" stick out (brass)	Slip-on	<b>X</b>	<b>X</b>
<b>401-30-62</b>	HD - 5/8" bore, 1/8" stick out (bottleneck, brass)	Slip-on	-	<b>X</b>
<b>401-14-62</b>	HD - 5/8" bore, 1/8" recess (copper)	Thread-on	<b>X</b>	<b>X</b>
<b>401-18-62</b>	SD - 5/8" bore, 1/8" stick out (copper)	Thread-on	-	<b>X</b>
<b>401-43-62</b>	SD - 5/8" bore, 1/8" recess (copper)	Thread-on	-	<b>X</b>
<b>401-20-62</b>	HD - 5/8" bore, 1/8" stick out (copper)	Thread-on	<b>X</b>	<b>X</b>
<b>401-30-62T</b>	SD - 5/8" bore, 1/8" stick out (bottleneck, brass)	Thread-on	-	<b>X</b>

See the TOUGH LOCK Consumables spec sheet (SP-TLC) for more options



## Consumable Options *(Continued)*

### QUICK LOAD® Liners

---

<b>415-26</b>	QUICK LOAD Liner Retainer
<b>415-24</b>	QUICK LOAD Liner Retainer (required for 3/32" wire)
<b>415-30-6Q</b>	QUICK LOAD Liner for 0.030" (0.8 mm) wire; 6' (1.8 m)
<b>415-30-15Q</b>	QUICK LOAD Liner for 0.030" (0.8 mm) wire; 15' (4.5 m)
<b>415-35-6Q</b>	QUICK LOAD Liner for 0.035" (0.9 mm) - 0.045" (1.2 mm) wire; 6' (1.8 m)
<b>415-35-10Q</b>	QUICK LOAD Liner for 0.035" (0.9 mm) - 0.045" (1.2 mm) wire; 10' (3.05 m)
<b>415-35-15Q</b>	QUICK LOAD Liner for 0.035" (0.9 mm) - 0.045" (1.2 mm) wire; 15' (4.5 m)
<b>415-116-6Q</b>	QUICK LOAD Liner for 0.052" (1.3 mm) - 1/16" (1.6 mm) wire; 6' (1.8 m)
<b>415-116-10Q</b>	QUICK LOAD Liner for 0.052" (1.3 mm) - 1/16" (1.6 mm) wire; 10' (3.05 m)
<b>415-116-15Q</b>	QUICK LOAD Liner for 0.052" (1.3 mm) - 1/16" (1.6 mm) wire; 15' (4.5 m)
<b>415-564-6Q</b>	QUICK LOAD Liner for 1/16" (1.6 mm) - 5/64" (2.0 mm) wire; 6' (1.8 m)
<b>415-564-15Q</b>	QUICK LOAD Liner for 1/16" (1.6 mm) - 5/64" (2.0 mm) wire; 15' (4.5 m)
<b>415-332-6Q</b>	QUICK LOAD Liner for 0.078" (2.0 mm) - 3/32" (2.4 mm) wire; 6' (1.8 m) (requires 415-24 retainer)
<b>415-332-15Q</b>	QUICK LOAD Liner for 0.078" (2.0 mm) - 3/32" (2.4 mm) wire; 15' (4.5 m) (requires 415-24 retainer)

### QUICK LOAD E-Z Feed™ Liners

---

<b>415-31</b>	QUICK LOAD Liner Retainer (required for 415-116-062Q liner)
<b>415-35-062Q</b>	QUICK LOAD Liner for 0.035" (0.9 mm) - 0.045" (1.2 mm) cored wire; 6' (1.8 m) (requires 415-26 retainer)
<b>415-116-062Q</b>	QUICK LOAD Liner for 0.045" (1.2 mm) - 1/16" (1.6 mm) cored wire; 6' (1.8 m) (requires 415-31 retainer)

### Conventional Liners (required for MIG guns equipped with wire brake only)

---

<b>415-30-6</b>	for 0.030" (0.8 mm) wire; 6' (1.8 m) – round wound
<b>415-30-15</b>	for 0.030" (0.8 mm) wire; 15' (4.5 m) – round wound
<b>415-35-6</b>	for 0.035" (0.9 mm) - 0.045" (1.2 mm) wire; 6' (1.8 m) – round wound
<b>415-35-10</b>	for 0.035" (0.9 mm) - 0.045" (1.2 mm) wire; 10' (3.05 m) – round wound
<b>415-35-15</b>	for 0.035" (0.9 mm) - 0.045" (1.2 mm) wire; 15' (4.5 m) – round wound
<b>415-116-6</b>	for 0.052" (1.3 mm) - 1/16" (1.6 mm) wire; 6' (1.8 m) – round wound
<b>415-116-10</b>	for 0.052" (1.3 mm) - 1/16" (1.6 mm) wire; 10' (3.05 m) – round wound
<b>415-116-15</b>	for 0.052" (1.3 mm) - 1/16" (1.6 mm) wire; 15' (4.5 m) – round wound
<b>415-564-6</b>	for 1/16" (1.6 mm) - 5/64" (2.0 mm) wire; 6' (1.8 m) – round wound
<b>415-564-15</b>	for 1/16" (1.6 mm) - 5/64" (2.0 mm) wire; 15' (4.5 m) – flat wound
<b>415-332-6</b>	for 0.078" (2.0 mm) - 3/32" (2.4 mm) wire; 6' (1.8 m) – flat wound
<b>415-332-15</b>	for 0.078" (2.0 mm) - 3/32" (2.4 mm) wire; 15' (4.5 m) – flat wound

### Jump Liners (required for MIG guns equipped with wire brake only; to be used with conventional liners)

---

<b>495-18-35</b>	for 0.035" (0.9 mm) - 0.045" (1.2 mm) wire; 26"
<b>495-18-116</b>	for 0.045" (1.2 mm) - 1/16" (1.6 mm) wire; 26"

# Components

## Air-Cooled Necks

<b>405-22QC</b>	22 degree neck, short length	<b>405-45QCL</b>	45 degree neck, medium length
<b>405-22QCL</b>	22 degree neck, medium length	<b>405-45QCL1*</b>	45 degree neck, long length
<b>405-45QC</b>	45 degree neck, short length	<b>405-180QC</b>	180 degree neck, medium length

*\* Non-configurable neck option*

## TOUGH GUN I.C.E.™ Necks

<b>590-22-XXXX</b>	22 degree neck, short length	<b>590-45L-XXXX*</b>	45 degree neck, medium length
<b>590-22L-XXXX*</b>	22 degree neck, medium length	<b>590-45L1-XXXX*</b>	45 degree neck, long length
<b>590-45-XXXX</b>	45 degree neck, short length	<b>590-180-XXXX*</b>	180 degree neck, medium length

*\* Non-configurable neck option*

*NOTE: XXXX in the part numbers above represent nozzle O.D.; i.e. 590-22-0.938 = 0.938" O.D. , 590-45L1-1.106 = 1.106" O.D. (refer to the O.D. column in the TOUGH LOCK Consumables spec sheet (SP-TLC) for more information)*

## Unicables

<b>CA3UXX</b>	Replaceable Uncable, Clutch	<b>CA3UXXS</b>	Replaceable Uncable, Solid Mount
<b>ECA3UXX</b>	Replaceable Uncable, Clutch (Euro)	<b>ECA3UXXS</b>	Replaceable Uncable, Solid Mount (Euro)

*NOTE: XX in the part numbers above represent cable length; i.e. CA3U04 = 4 ft, CA3U04.5 = 4.5 ft, CA3U10 = 10 ft, etc. (refer to Ordering Information on the last page for available cable lengths)*

## Control Cables

<b>519-1</b>	2 meter – not terminated
<b>519-2</b>	5 meter – not terminated
<b>519-4</b>	18" 4-pin AMP® CPC Series connector (Motoman®/Miller®)
<b>519-6</b>	24" 3-pin Amphenol® 97 Series connector
<b>519-9</b>	18" 12-pin Burndy® UTG Series connector (ABB®)
<b>519-10</b>	24" 5-pin Mini plug

### For Clutch Only

<b>AS-708-14</b>	3-pin two Cable Cordset - complete length (includes both AS-708-14-1 & AS-708-14-2)
<b>AS-708-14-1</b>	Clutch Cord - coiled 0.3M; terminated both ends mini plug 3-pin female to male
<b>AS-708-14-2</b>	Cordset - main length 5.0M; 3-pin female to not terminated



# Mounting Options

## Gun Mounts

CACM	Clutch Mount	CASM	Solid Mount
------	--------------	------	-------------

## Mounting Arms (Please see Gun Configurations for dimensional information)

<b>CA2201</b>	Mounting Arm for 22 degree short length neck (part #405-22QC); 316 mm TCP
<b>CA2202</b>	Mounting Arm for 22 degree medium length neck (part #405-22QCL); 350 mm TCP
<b>CA2203</b>	Mounting Arm for 22 degree medium length neck (part #405-22QCL); 400 mm TCP
<b>CA4501</b>	Mounting Arm for 45 degree medium length neck (part #405-45QCL); 350 mm TCP
<b>CA4502</b>	Mounting Arm for 45 degree long length neck (part #405-45QCL1); 400 mm TCP
<b>CA1801</b>	Mounting Arm for 180 degree neck (part #405-180QC); 294 mm TCP

## Insulating/Transition Discs

### For ABB® Robots

<b>59D02</b>	IRB6, IRB140, 1400, 1500, 1600, 2000, 4000, M97A, IRB2400L
<b>59D04</b>	IRB2400-10, IRB2400-16, IRB2600, IRB440L, IRB4600-20/2.5
<b>59DT-011</b>	IRB1600ID (kit includes transition disc and 59D02 insulating disc)

### For COMAU® Robots

<b>59D01</b>	Smart6 6-14
--------------	-------------

### For FANUC® Robots

<b>59D02</b>	100, 100i, 100iB, 120iB, S-6, M710-20L
<b>59D05</b>	ArcMate 50iB, 50iC
<b>59DT-003</b>	100iC, 100iC-12, 100iC-6L, 100iC-7L, 100iC-8L, 120iC, 120iC-10L, 120iC-12L, M710iC-12L (kit includes transition disc and 59D01 insulating disc)
<b>59DT-010</b>	100iD, 100iD-10L (kit includes transition disc and 59D01 insulating disc)

### For Kawasaki® Robots

<b>59DT-001</b>	RS050N, RS30N, RS030N, RS80N (kit includes transition disc and 59D02 Insulating disc)
-----------------	---

### For KUKA® Robots

<b>59D02</b>	KR5 arc, KR6, KR6-2, KR6 arc, KR6 KS, KR16 L6, KR16 L6 arc, KR16 LS KS
<b>59D05</b>	KR5 R1400, KR6 R700 sixx, KR6 R900 sixx, KR10 R900 sixx, KR10 R1100 sixx, KR6 R1820, KR8R1620, KR10 R1420
<b>59D06</b>	KR16, KR16-2, KR16 S, KR16 KS, KR30 L16-2, KR20 R3100
<b>59DT-006</b>	KR30, KR60, KR60 L45, KR60 L30 (kit includes transition disc and 59D02 insulating disc)
<b>59DT-012</b>	KR16 HW (kit includes transition disc and 59D02 insulating disc)

### For Yaskawa® Motoman® Robots

<b>59D02</b>	K6A, K10S, SK6, SK16, SK16X, HP6, HP50-20, MH50-20, MH6, SSF2000, UP6, UP20
<b>59D05</b>	K35, HP3, HP3C, HP3JC, MH5, MH5L, SV3
<b>59D07</b>	MH5, MH5L
<b>59DT-001</b>	MH50 (kit includes transition disc and 59D02 insulating disc)
<b>59DT-002</b>	EA Series (kit includes transition disc and 59D03 insulating disc)
<b>59DT-008</b>	MA1440, AR1440, MH12, MA2010, AR2010, MA3210, MH4, AR1730 (kit includes transition disc and 59D01 insulating disc)
<b>59DT-013</b>	HC10DT-XP (kit includes transition disc and 59D02 insulating disc)

### For Miller® Robots

<b>59D02</b>	MRV-2
--------------	-------

### For OTC Daiher® Robots

<b>59D02</b>	MRV-6, EX-V6, EX-V6L, NV25, EX-V16, DR-2000, DR-4400, DR-4200L, DR-4400
--------------	---

### For Reis® Robots

<b>59D06</b>	RV4, RV6, RV6L, RV20-6
--------------	------------------------

### For Panasonic® Robots

<b>59D03</b>	VR-008A, VR-006A, VR-005C, VR-005LII, AW-010A, AW-8010, AW-005A, AW-005C, AW-005CL, AW-006A, VR-006AL, TL-1800, TL-2000, TA-1600, TA-1800, TA-2000
<b>59DT-005</b>	TM-1100, TM-1400, TM-1600, TM-1800 (kit includes transition disc and 59D02 insulating disc)

### For Universal Robots

<b>59D06</b>	UR5, UR5e, UR10, UR10e
--------------	------------------------

# Power Pins

## Power Pins

426	Bernard®	214-7	Lincoln®	214-30	Panasonic®
425-20E	Euro	214-40	Lincoln (short)	214	Tweco® #4
214-17	Fronius®	214-1	Miller®	214-12	Tweco #5
425E	L-Tec® Euro	214-39	OTC Daihen®	214-18	Tweco #5 (external gas line)

## AutoLength™ Pins\*

425-X20	Euro	214-X1	Miller	214-X0	Tweco #4
214-X17	Fronius	214-X39	OTC Daihen	214-X12	Tweco #5
214-X40	Lincoln (short)	214-X30	Panasonic		

*\*For use with QUICK LOAD Liners only.*

*NOTE: For wire sizes between 0.030" and 0.045", X="8"; For wire sizes between 0.052" and 3/32", X="9". AutoLength™ Pin not compatible with wire size selections for aluminum wire.*

## Peripherals & Accessories



### **TOUGH GUN® TT4 Reamer** *Power Through Welding Spatter for increased Uptime and Weld Quality*

Automating spatter removal helps to extend the life of your robotic MIG guns and consumables, benefiting your bottom line, production uptime and throughput. Operates reliably in the harshest welding environments.

Visit [Tregaskiss.com/robotic-nozzle-cleaning-stations](http://Tregaskiss.com/robotic-nozzle-cleaning-stations) for ordering information.

### **TOUGH GARD Anti-Spatter Liquid**



This ready-to-use water-soluble, non-toxic product creates a sacrificial surface that reduces spatter adhesion. This prolongs the life of your consumables and minimizes downtime due to nozzle cleaning which can help reduce your operating and maintenance costs.

### **TOUGH GARD Anti-Spatter Liquid**

<b>TG-101-05</b>	5.28 U.S. Gallon / 20 L
<b>TG-101-55</b>	55 U.S. Gallon / 208 L
<b>TG-101-01</b>	1 U.S. Gallon / 3.78 L
<b>TG-101-32SP</b>	32 fl. oz. / 946 mL (spray bottle)
<b>TG-101-14S</b>	16.9 fl. oz. / 500 mL

### **TOUGH GARD® Multi-Feed System**



Eliminate the need to frequently refill sprayer reservoirs with the TOUGH GARD Multi-Feed System from Tregaskiss. Feed up to 10 TOUGH GUN Reamer units from a single 5-gallon or 55-gallon drum of TOUGH GARD Anti-Spatter Liquid.

<b>TG-103-05-2</b>	for 5-Gallon pail (up to 2 nozzle cleaning stations)
<b>TG-103-05-10</b>	for 5-Gallon pail (up to 10 nozzle cleaning stations)
<b>TG-103-55-10</b>	for 55-Gallon drum (up to 10 nozzle cleaning stations)

### **TOUGH GARD Multi-Feed System Hose (sold separately)**

<b>TG-103-100</b>	100' Multi-Feed Hose
<b>TG-103-200</b>	200' Multi-Feed Hose

### **Neck Checking Fixture**



The TOUGH GUN Neck Checking Fixture allows you to verify and re-master your tool center point (TCP). In the event of a collision, this fixture can be used to realign the neck.

<b>G-405CA</b>	Neck Checking Fixture for air-cooled Neck assemblies
<b>G-405CA + G-495-8</b>	Neck Checking Fixture for TOUGH GUN I.C.E.™ Neck assemblies

# Ordering Information

## Step #1 - TOUGH GUN CA3 Robotic MIG Guns

CA3 Series			Gun Style	Neck	Options	Contact Tip** + Diffuser	Cable Length	Nozzle	Control Cable	Wire Size***	Power Pin
R	A	1	1	C	A	1	B	A	1	C	M
			1 Clutch	<i>Air-Cooled</i>	A No options	<i>AccuLock™</i>	A 3.0'	<i>Slip-On</i>	0 No cable	<i>QUICK LOAD</i>	B Bernard 426
			2 Solid mount**	<i>Short Length</i>	B Wire brake	<i>For Slip-On Nozzles</i>	B 3.5'	A 401-6-62	<i>Bare End</i>	<i>Pro Liner**</i>	D OTC Daihen
				A 22 degree	C Air blast	A T-A0XXCH <sup>^</sup> + D-ATSH	C 4.0'	D 401-81-62	1 5m	A 0.035"	214-39
				405-22QC	E Wire brake	B T-A0XXZH* + D-ATSH	D 4.5'	G 401-8-62	2 2m	N 1.0 mm	E Euro 425-20E
				B 45 degree	+ air blast	C T-A0XXWH* + D-ATSH	E 5.0'	K 401-48-62	<i>4-Pin</i>	P 0.045"	F Fronius
				405-45QC		<i>For Thread-On Nozzles</i>	F 5.5'	N 401-71-62	3 18"	W 0.052"	214-17
				C 180 degree		D T-A0XXCH <sup>^</sup> + D-ATTH	G 6.0'	P 401-87-62	<i>3-Pin</i>	Y 1/16"	L Lincoln 214-7
				405-180QC		E T-A0XXZH* + D-ATTH	H 6.5'	3 401-30-62	4 24"	<i>Standard</i>	M Miller 214-1
				<i>Medium Length</i>		F T-A0XXWH* + D-ATTH	J 7.0'	<i>Thread-On</i>	<i>12-Pin</i>	<i>Liner***</i>	C L-Tec Euro
				D 22 degree		<i>No Consumables</i>	K 7.5'	D 401-14-62	5 18"	B 0.030"	425E
				405-22QCL		0 No contact tip / diffuser	L 8.0'	E 401-18-62	<i>5-Pin</i>	C 0.035"	P Panasonic
				E 45 degree			M 8.5'	G 401-43-62	7 24"	D 1.0 mm	214-30
				405-45QCL			N 9.0'	L 401-20-62		E 0.045"	R Tweco #5
				<i>TOUGH GUN I.C.E.™†</i>			P 9.5'	4 401-30-62T		G 0.052"	(external gas
				<i>Short Length</i>			R 10.0'	<i>No Consumables</i>		J 1/16"	line) 214-18
				H 22 degree			S 12.0'	0 No nozzle		K 0.070"	S Lincoln
				590-22-X.XXX			T 15.0'			L 0.078"	(short) 214-40
				J 45 degree						M 3/32"	T Tweco #4 214
				590-45-X.XXX						<i>Teflon®</i>	W Tweco #5
										<i>Liner for</i>	214-12
										<i>Aluminum</i>	
										R 0.035"	
										T 1/16"	
										U 0.045"	
										<i>No Consumables</i>	
										0 N/A	

\*\*Control cable option not available for solid mount models

\*X.XXX represents nozzle O.D.

\*\*XX = wire size

^Not available in 0.055" or 0.078" wire sizes

\*Available in 0.035", 1.0 mm and 0.045" wire sizes

\*Available in 0.035", 1.0 mm, 0.045" and 0.052" wire sizes

\*\*\*Wire size option determines contact tip and liner size

††Recommended liner provides superior wire feeding; Not available in cable lengths longer than 6 feet; Not compatible with wire brake selection

\*\*\*QUICK LOAD Liner comes standard on all configurations except if equipped with wire brake; Conventional rear-loading liner comes standard on all configurations equipped with wire brake

## Step #2 - Insulating/Transition Discs

Select your insulating disc from page 8 and enter it here:

## Step #3 - Mounting Arms

Select your insulating disc from page 8 and enter it here:

Brand and product names shown above are trademarks of their respective owners.

Tregaskiss®, TOUGH GUN®, TOUGH LOCK®, TOUGH ACCESS™ and QUICK LOAD® are trademarks of Tregaskiss, a division of ITW Canada Inc.

Subject to Change – The information presented in this spec sheet is accurate to the best of our knowledge at the time of printing. Please visit Tregaskiss.com for the most up-to-date information.

Distributed By:

