

TOUGH GUN™ AW2 Water-Cooled Automatic 600 amp MIG Guns

Issued Jan. 2017 • Index No. WCA/1.3

Automatic Water-Cooled
MIG Welding Guns



Quick Specs

Application

Heavy Equipment
Heavy Fabrication

Processes

MIG (GMAW) Welding

Consumables

Centerfire™
Quik Tip™
Elliptical 7400 and 1500 Series
Universal Conventional Liner

Power Cable Lengths

3' to 25' in 1/2' increments

Duty Cycle Rating

100%: 600 amp with
CO₂ gas and mixed gases

Ratings are based on tests that comply
with IEC 60974-7 standards

Maximizing Throughput. Minimizing Costs.

Tregaskiss™ TOUGH GUN™ AW2 Automatic MIG Guns are designed for dependable performance in high amperage, high temperature hard tooling welding applications.

Maintenance personnel appreciate the simplicity of the gun design with its threaded connections and minimal number of replacement parts.

Available in two body lengths and in both cable and cableless versions, this MIG gun adapts easily to most applications.

- Power cable equipped guns available in lengths of 3' to 25' in 1/2' increments
- Choose from 9.25" (23.5 cm) or 12.25" (31.1 cm) body lengths to better reach the weld
- Contact tip options include Bernard™ Centerfire™, Quik Tip™, and Elliptical 7400 and 1500 Series
- Internal threaded connections stay tight inside the anti-vibration compression fit body for good electrical connectivity and longer life
- Power pins connect to wire feeders and machines from most major manufacturers



Choose from 44 different cable lengths ranging from 3' to 25' in 1/2' increments



Few replacement parts results in low inventory costs



Simple design makes maintenance easy and quick



Tregaskiss
2570 North Talbot Road
Windsor, Ontario N0R 1L0
Canada

Phone: 1-855-MIGWELD (644-9353) (US & Canada)
+1-519-737-3000 (international)
Fax: 519-737-1530
For more information, visit us at Tregaskiss.com

General Safety

Before installation or operation of Water-Cooled Automatic MIG Guns, please read the safety precautions listed below.

1. Always wear a properly fitted welding helmet with the proper grade of filter plate and suitable welding gloves.
2. All exposed skin should be covered with flame resistant, protective clothing. **DO NOT WEAR CLOTHING MADE FROM FLAMMABLE SYNTHETIC FIBERS.**
3. Protective screens or barriers should be used to protect others from spatter, flash and glare while welding.
4. Prevent fires by ensuring that hot slag or sparks do not contact combustible solids, liquids or gases.
5. Ensure that operator's head is not too close to the arc and that adequate ventilation is available.
6. Constant repetitive motion may lead to cumulative trauma disorders.
7. Do not touch live electrical parts. The following should be checked to prevent electrical shock:
 - Equipment is adequate for the job, properly grounded and installed according to code.
 - Faulty or damaged equipment is repaired or replaced.
 - Proper operator maintenance is performed to prevent excess spatter accumulation in the nozzle, or the contact tip or other areas of the gun.
 - Electrical insulating components are in place and not damaged. Repair or replace if necessary.
 - Operator and surroundings are not wet.
 - Cables are not wrapped around operator's body.
 - Equipment is off when not in use.
8. CSA Standard W117.2 CODE FOR SAFETY IN WELDING AND CUTTING obtainable from the Canadian Standards Association, Standards Sales, 178 Rexdale Boulevard, Rexdale, Ontario, Canada M9W 1R3.
9. ANSI Standard Z49.1 CODE FOR SAFETY IN WELDING AND CUTTING obtainable from the American National Standards Institute, 1430 Broadway, New York, NY 10018.

CALIFORNIA PROPOSITION 65 WARNING

This product, when used for welding or cutting, produces fumes or gases which contain chemicals known to the State of California to cause birth defects and, in some cases, cancer.

This product contains chemicals, including lead, known to the State of California to cause cancer, and birth defects or other reproductive harm. *Wash hands after use.*

(California Health & Safety Code Section 25249.5 at seq.)

Commercial Warranty

Product is warranted to be free from defects in material and workmanship for the period specified below after sale by an authorized Buyer:

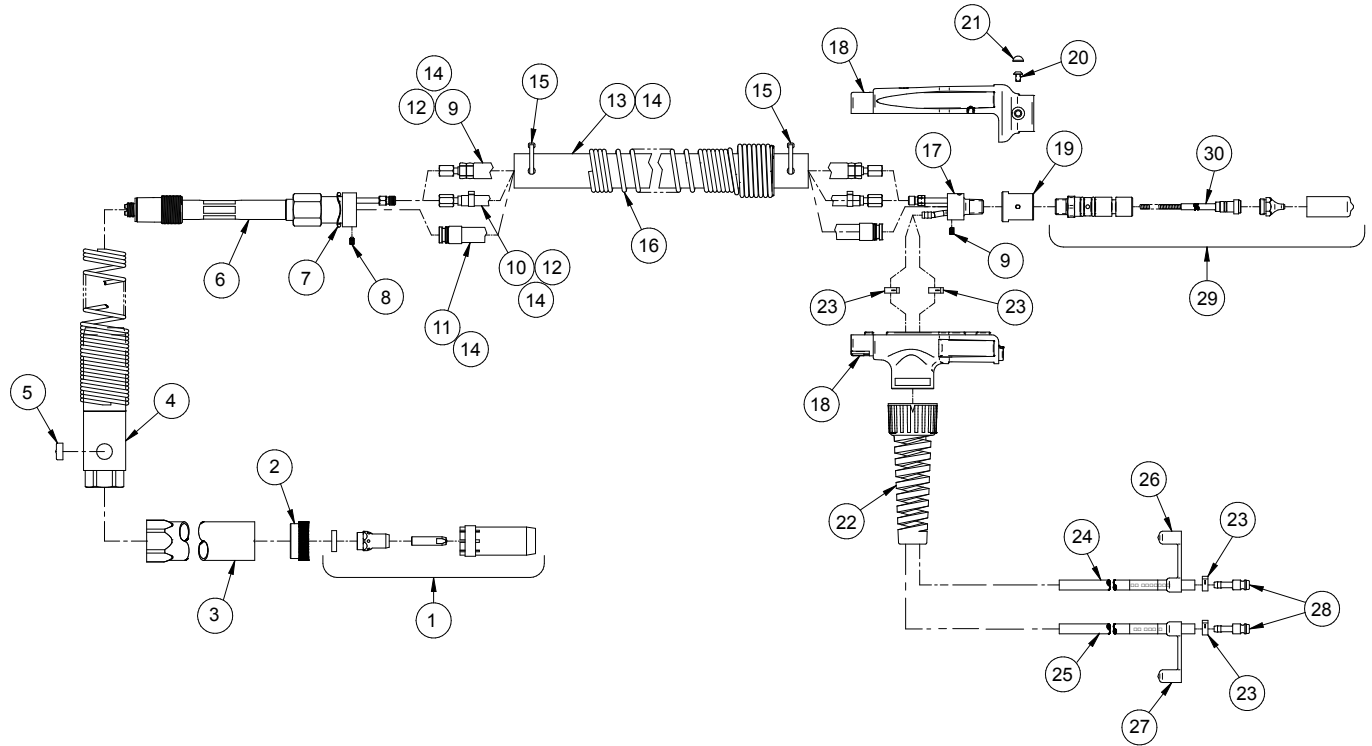
TOUGH GUN™ Robotic MIG Guns and Components	1 year
TOUGH GUN™ Automatic MIG Guns	1 year
TOUGH GUN™ Reamer	1 year
TOUGH GUN™ Reamer when factory-equipped with Lubricator	2 years
TOUGH GUN™ Reamer when factory-equipped with Lubricator and used only with Tregaskiss™ TOUGH GARD™ Anti-Spatter Liquid	3 years
TOUGH GUN™ Robotic Peripherals (Clutch, Sprayer, Wire Cutter, Mounting Arms)	1 year
Low-Stress Robotic (LSR) Unicables	2 years

Tregaskiss reserves the right to repair, replace, or refund the purchase price of non-conforming product. Product found not defective will be returned to the Buyer after notification by Customer Service.

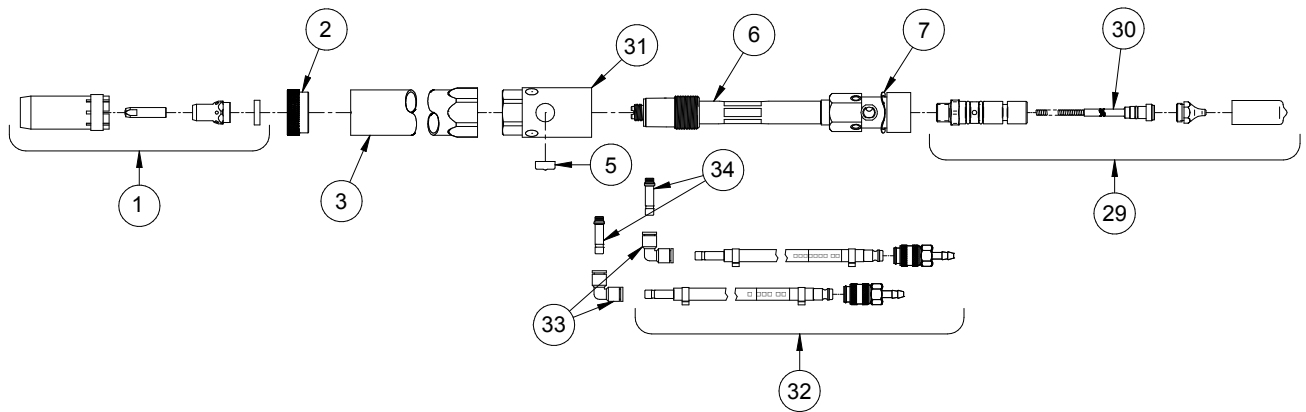
Tregaskiss makes no other warranty of any kind, expressed or implied, including, but not limited to, the warranties of merchantability or fitness for any purpose. Tregaskiss shall not be liable under any circumstances to Buyer, or to any person who shall purchase from Buyer, for damages of any kind, including, but not limited to, any direct, indirect incidental or consequential damages or loss of production or loss of profits resulting from any cause whatsoever, including, but not limited to, any delay, act, error or omission or Tregaskiss.

Genuine Tregaskiss™ parts must be used for safety and performance reasons or the warranty becomes invalid. Warranty shall not apply if accident, abuse, or misuse damages a product or if a product is modified in any way except by authorized Tregaskiss personnel.

With Cable *(refer to Parts List on following pages)*



Without Cable *(refer to Parts List on following pages)*



Parts List

Item #	Part #	Description
1	<i>See page 6</i>	Consumables
2	1810024	End Cap Assembly
3	<i>See Inner/Outer Body Components on page 5</i>	Outer Body
4	2520029	Rear Housing Assembly
5	2950012	Cap Plug
6	<i>See Inner/Outer Body Components on page 5</i>	Inner Body
7	2500003	Wave Spring
8	2300003	Set Screw
9	<i>See Cable Components on page 5</i>	Power Cable Assembly
10		Return Hose Assembly
11		Conduit Assembly (Replacement O-Ring Part #2040008)
12		Return Hose & Power Cable Set (Includes #9 & #10)
13		Outer Cover
14		Cable Assembly (Includes #9, #10, #11, & #13)
15	210253	Cable Tie
16	2520097	Spring Strain Relief
17	2200122	Water Block Assembly

Item #	Part #	Description
18		Rigid Strain Relief Kit (Includes Top & Bottom Halves)
	2520073W	Strain Relief with Installed Gas Pin (Bernard Power Pin)
	2520077	Strain Relief (All Other Power Pins)
19	1010027	Adaptor Block (Not Req'd on Bernard or Euro Power Pin)
20	2280056	Strain Relief Screw
21	1620003	Screw Cover
22	2520033	Strain Relief, Hose
23	1520005	Clamp, Hose
24	RSH-OUT	Hose Assembly, "Water Out"
25	RSH-IN	Hose Assembly, "Water In"
26	2950018	End Cap, Red
27	2950017	End Cap, Blue
28	658-2	Quick Connect Fitting, Male
29	<i>See SP-DPK Spec Sheet</i>	Power Pin Components
30	<i>See SP-L Spec Sheet</i>	Liner Assembly
31	1810011	Rear Housing Assembly, Power Pin
32	1880162	Replacement Hose Set, 5'
33	1720034	Elbow, Push-In Type
34	1720048	Water Fitting (Includes O-Ring Part #9165)

Inner/Outer Body Components

Item #	Gun Body Length 9.25", Cable	Gun Body Length 12.25", Cable	Gun Body Length 9.25", No Cable	Gun Body Length 12.25", No Cable	Description
3	B-1000	B-1300	B-1000	B-1300	Outer Body
6	AW2S-0925	AW2S-1225	1370181A	1370181B	Inner Body

Cable Components

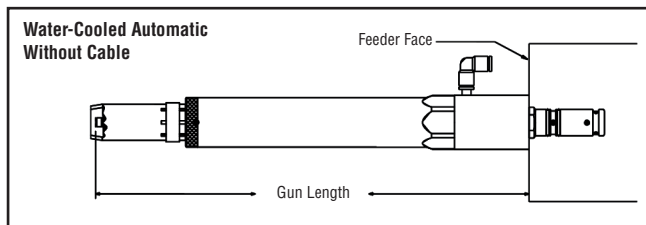
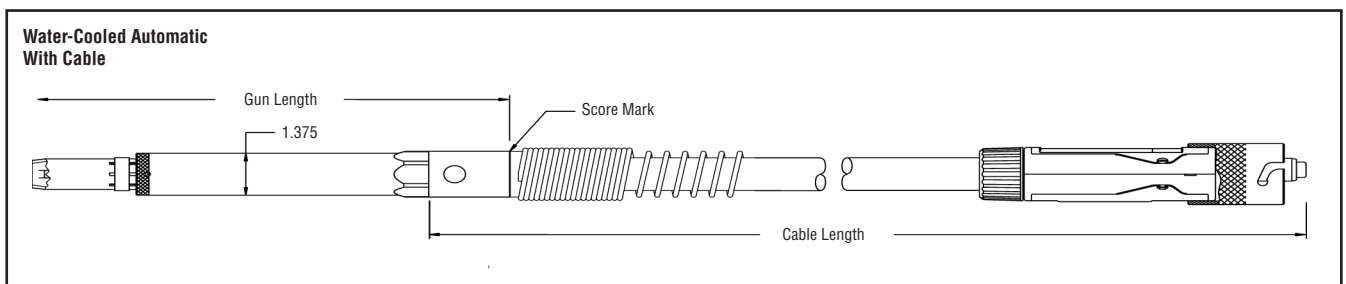
Item #	Part #	Description
9	RPC-XX* or RPC-XX.X**	Power Cable Assembly
10	RRH-XX* or RRH-XX.X**	Return Hose Assembly
11	WC2CA-XX* or WC2CA-XX.X**	Conduit Assembly (<i>Replacement O-Ring Part #2040008</i>)
12	RCS-XX* or RCS-XX.X**	Return Hose & Power Cable Set (<i>Includes #9 & #10</i>)
13	WC20C-XX* or WC20C-XX.X**	Outer Cover
14	RCA-XX* or RCA-XX.X**	Cable Assembly (<i>Includes #9, #10, #11, & #13</i>)

NOTE: Lengths available from 3' to 25' in increments of 0.5'

*XX represents length (i.e. RPC-03 = 3.0' length)

**XX.X represents length (i.e. RPC-05.5 = 5.5' length)

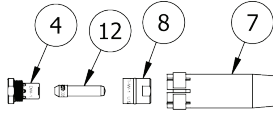
Measuring Gun Length and Cable Length



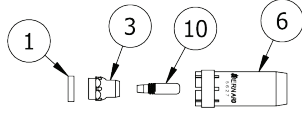
Functional gun length will vary with your choice of consumables. Front end consumable combinations other than the standard consumables can introduce a gun length variance of $\pm 0.25"$ (6.4 mm). Tolerance on assembled cable length is $\pm 2"$ (50.8 mm). Length will vary depending upon power pin used.

Consumables

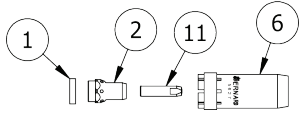
Option A: Centerfire Series



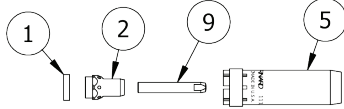
Option B: Quik Tip Series



Option C: Elliptical - 7400 Series



Option D: Elliptical - 1500 Series



Item #	Part #	Description
1	1840003	Insulator
2	5623	Diffuser, water-cooled, Elliptical
3	1070101	Diffuser, water-cooled, Quik Tip
4	DW-1	Diffuser, water-cooled, Centerfire
5	1110007	Nozzle, water-cooled, 1/8" recess, Elliptical 1500 Series
6	5627	Nozzle, water-cooled, 1/8" recess, Elliptical 7400 Series & Quik Tip
7	NW-3418C	Nozzle, water-cooled, 1/8" recess, Centerfire
8	THW-1	Tip Holder, water-cooled, Centerfire
9	1591	Contact Tip, Elliptical 1500 Series
10	T1045	Contact Tip, Quik Tip
11	7491	Contact Tip, Elliptical 7400 Series
12	T-045	Contact Tip, Centerfire

Accessory Kits

Part #	Description
1880159	Pitch Rack Kit: AWS Style Includes 24 and 32 pitch racks with mounting screws Requires a minimum gun length of 9.60" (245 mm) and is field installable
WC2HK-1	Water Cooler Hookup Kit Includes two 15' hoses and fittings to connect our gun to a water cooler
WC2HK-2	Water Cooler Hookup Kit Includes 30' hoses and fittings to connect our gun to a water cooler

Ordering Information *(With Cable)*

Water-Cooled Automatic Series			Amp	Cable Length			Power Pin	Gun Length	Consumables
A	W	2	6	0	4	8	M	A	C
<i>Note: Tolerance on assembled Cable Length is ± 2"</i> <i>See page 4 for how to measure cable length</i>				036	3.0'	B Bernard™ E Euro H Hobart® L Lincoln® M Miller® N National® O OXO™ T Tweco® #4 W Tweco #5	A 9.25" B *12.25"	<i>*All automatics with a gun length of 12.25" will accept a pitch rack</i>	A Centerfire Series
				042	3.5'				B Quik Tip Series
				048	4.0'			C Elliptical, 7400 Series	
				054	4.5'			D Elliptical, 1500 Series	
				060	5.0'			X Special Request	
				066	5.5'				
				072	6.0'				
				078	6.5'				
				084	7.0'				
				090	7.5'				
				096	8.0'				
				102	8.5'				
				108	9.0'				
				114	9.5'				
				120	10.0'				
				126	10.5'				
				132	11.0'				
				138	11.5'				
				144	12.0'				
				150	12.5'				
				156	13.0'				
				162	13.5'				
				168	14.0'				
				174	14.5'				
				180	15.0'				
				186	15.5'				
				192	16.0'				
				198	16.5'				
				204	17.0'				
				210	17.5'				
				216	18.0'				
				222	18.5'				
				228	19.0'				
				234	19.5'				
				240	20.0'				
				246	20.5'				
				252	21.0'				
				258	21.5'				
				264	22.0'				
				270	22.5'				
				276	23.0'				
				282	23.5'				
				288	24.0'				
				294	24.5'				
				300	25.0'				

Ordering Information *(Without Cable)*

Water-Cooled Automatic Series			Amp	Cable Length			Power Pin	Gun Length	Consumables
A	W	2	6	0	0	0	M	A	C
<i>Note: Guns without cable come with 60" water hoses for connection to water circulator</i>							L Lincoln®	A 9.25"	A Centerfire Series
							M Miller®	B *12.25"	B Quik Tip Series
							T Tweco® #4	*All automatics with a gun length of 12.25" will accept a pitch rack	C Elliptical, 7400 Series
							W Tweco #5		D Elliptical, 1500 Series
								X Special Request	

Brand and product names shown above are trademarks of their respective owners.

Subject to Change – The information presented in this spec sheet is accurate to the best of our knowledge at the time of printing. Please visit Tregaskiss.com for the most up-to-date information.

Distributed By:

